

# KING POST TRUSSES

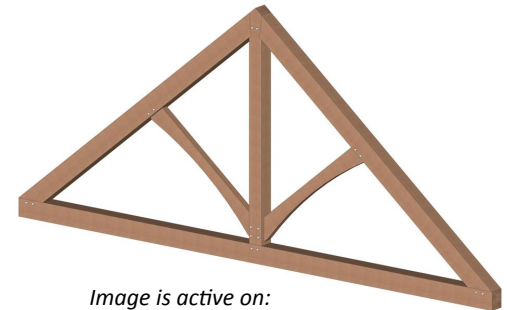


Image is active on:  
[vermonttimberworks.com](http://vermonttimberworks.com)

## 3-D Design

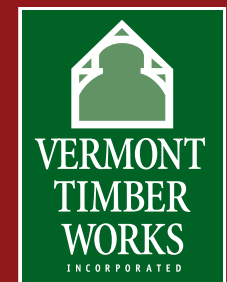
Our trusses are designed using sophisticated solid modeling software. Please visit our website where the 3-D models can be downloaded and viewed.

## Hand Crafted Timber Trusses

- King Post Trusses are economical.
- They can span thirty two feet or more.
- Use steel or mortise and tenon joinery.
- Are available in a variety of finishes.
- Douglas Fir, Pine, Hemlock and Oak timber.

Vermont Timber Works, Inc. handcrafts all trusses using time honored techniques. Each is unique and can be tailored for custom applications.

Please ask your dealer for details or visit our web page where you can see hundreds of photographs of our work.



[vermonttimberworks.com](http://vermonttimberworks.com)