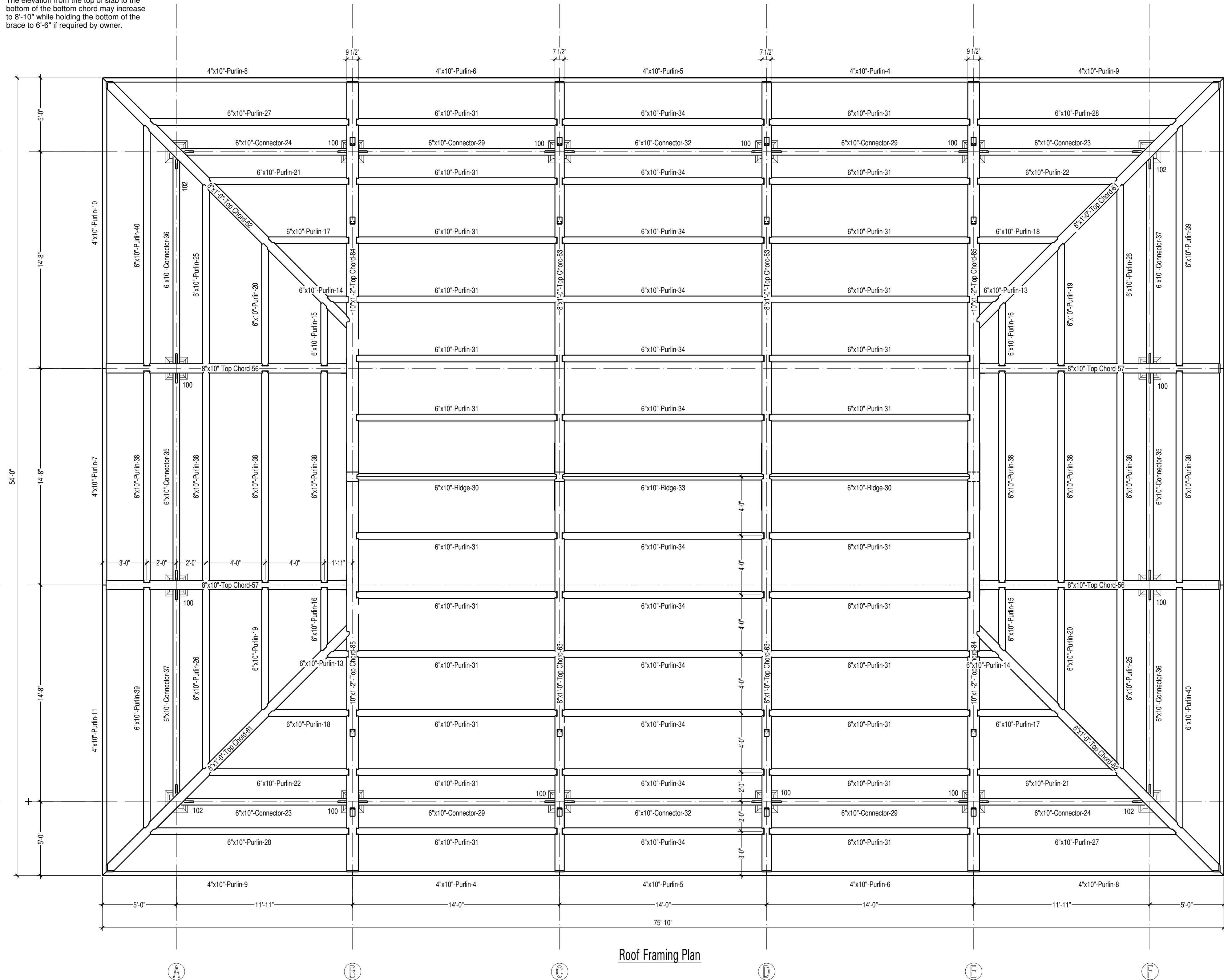


**Note:**  
The elevation from the top of slab to the bottom of the bottom chord may increase to 8'-10" while holding the bottom of the brace to 6'-6" if required by owner.

Elevation



Roof Framing Plan

**General Notes:**

Timbers to be Douglas Fir #1 & Better S4S  
 Pegs to be 1" Oak  
 All edges to have 1/2" chamfer, except columns which have a 1" chamfer.  
 All chamfers will be held back +/- 2 3/4" from every intersection.  
 One coat of stain, oil or urethane to be shop applied on all sides.  
 All Bolts to be 3/4" zinc coated Grade A307.  
 All Steel to be A36 and to be shop primed flat black.  
 All Steel base plates and anchor rods to be hot-dip galvanized.  
 All other Steel to have flat black finish coat.  
 Install anchor rods with Hilti Epoxy Adhesive or equivalent.  
 Conduit locations to be determined. Final locations of conduit to be reviewed by Vermont Timber Works and Fire Tower prior to drilling.

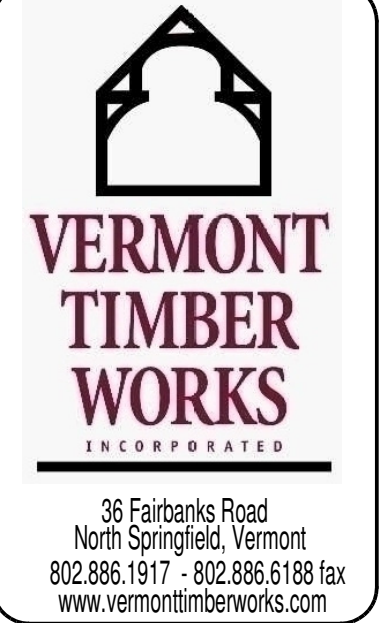
**BASIS OF DESIGN**

ROOF LOADS		VALUE
Live Load	20 psf	
Dead Load	10 psf roof materials 10 psf timber structure weight	
FLOOR LOADS		VALUE
Live Load	n/a	
Dead Load	n/a	
ROOF SNOW LOADS		VALUE
Pg	25 psf	
Cs	1.0	
Ce	1.0	
Cl	1.2	
I snow	1.0	
Ps	20 psf	
Leeward Roof	25 psf	
Unbalanced Snow Load	(with 6 psf on windward roof)	
WIND LOADS		VALUE
Basic Wind Speed	100 mph (3sec gust)	
Building Category	III	
I wind	1.15	
Building Classification	Open	
Exposure	B	
Internal Pressure Coefficient	+/- 0.0	

Filename: 30: Cadwalader Picnic Pavilion 30.3d  
 Output date: 30: 2/16/2011  
 ReLUK date: 30: 2/16/2011  
 User name:  
 Customer: City of Trenton  
 Project number:

Project description:

No.	PL	Name	Material	Quantity	List width (inch)	List height (inch)	List length (inch)	Real Length (inch)
1	*	Brace	Douglas Fir	28	4"	6"	5'	3'-6"
2	*	Brace	Douglas Fir	8	4"	6"	5'	3'-7"
3	*	Purlin	Douglas Fir	2	4"	10"	16'	14'
4	*	Purlin	Douglas Fir	2	4"	10"	16'	14'
5	*	Purlin	Douglas Fir	2	4"	10"	16'	14'
6	*	Purlin	Douglas Fir	2	4"	10"	16'	14'
7	*	Purlin	Douglas Fir	2	4"	10"	16'	14'
8	*	Purlin	Douglas Fir	2	4"	10"	18'	16'-11"
9	*	Purlin	Douglas Fir	2	4"	10"	18'	16'-11"
10	*	Purlin	Douglas Fir	2	4"	10"	22'	19'-8"
11	*	Purlin	Douglas Fir	2	4"	10"	22'	19'-8"
12	*	Plug	Douglas Fir	16	4"	1 1/2"	4"	4"
13	*	Purlin	Douglas Fir	2	6"	10"	2'	1'-4"
14	*	Purlin	Douglas Fir	2	6"	10"	2'	1'-5"
15	*	Purlin	Douglas Fir	2	6"	10"	6"	4'-3"
16	*	Purlin	Douglas Fir	2	6"	10"	6"	4'-3"
17	*	Purlin	Douglas Fir	2	6"	10"	6"	4'-3"
18	*	Purlin	Douglas Fir	2	6"	10"	6"	4'-3"
19	*	Purlin	Douglas Fir	2	6"	10"	6"	4'-3"
20	*	Purlin	Douglas Fir	2	6"	10"	6"	4'-3"
21	*	Purlin	Douglas Fir	2	6"	10"	10"	8'-5"
22	*	Purlin	Douglas Fir	2	6"	10"	10"	8'-5"
23	*	Connector	Douglas Fir	2	6"	10"	12"	11'-5"
24	*	Connector	Douglas Fir	2	6"	10"	12"	11'-5"
25	*	Purlin	Douglas Fir	2	6"	10"	14"	12'-3"
26	*	Purlin	Douglas Fir	2	6"	10"	14"	12'-3"
27	*	Purlin	Douglas Fir	2	6"	10"	14"	13'-5"
28	*	Connector	Douglas Fir	4	6"	10"	14"	13'-5"
29	*	Connector	Douglas Fir	4	6"	10"	14"	13'-5"
30	*	Ridge	Douglas Fir	2	6"	10"	14"	13'-6"
31	*	Purlin	Douglas Fir	24	6"	10"	16"	13'-6"
32	*	Connector	Douglas Fir	2	6"	10"	16"	13'-6"
33	*	Ridge	Douglas Fir	1	6"	10"	16"	13'-7"
34	*	Purlin	Douglas Fir	12	6"	10"	16"	13'-7"
35	*	Connector	Douglas Fir	2	6"	10"	16"	14'-3"
36	*	Connector	Douglas Fir	2	6"	10"	16"	14'-3"
37	*	Connector	Douglas Fir	2	6"	10"	16"	14'-3"
38	*	Purlin	Douglas Fir	8	6"	10"	16"	14'-4"
39	*	Purlin	Douglas Fir	2	6"	10"	18"	16'-3"
40	*	Purlin	Douglas Fir	2	6"	10"	18"	16'-3"
41	*	Web	Douglas Fir	4	8"	6"	4"	3'-5"
42	*	Web	Douglas Fir	4	8"	6"	5"	3'-6"
43	*	Web	Douglas Fir	4	8"	6"	5"	3'-7"
44	*	Web	Douglas Fir	4	8"	6"	10"	9'-5"
45	*	Web	Douglas Fir	4	8"	6"	7'-5"	7'-5"
46	*	Web	Douglas Fir	2	8"	6"	10"	9'-5"
47	*	Web	Douglas Fir	2	8"	6"	10"	9'-5"
48	*	Web	Douglas Fir	4	8"	8"	3'	1'-7"
49	*	Web	Douglas Fir	4	8"	8"	3'	1'-8"
50	*	Web	Douglas Fir	4	8"	8"	7'	6'-2"
51	*	Web	Douglas Fir	4	8"	8"	7'	6'-2"
52	*	King Post	Douglas Fir	2	8"	8"	12'	11'
53	*	Web	Douglas Fir	4	8"	8"	12'	11'-2"
54	*	Post	Douglas Fir	8	8"	10"	10"	8'-2"
55	*	Bolton Chord	Douglas Fir	4	8"	10"	18"	16'-7"
56	*	Top Chord	Douglas Fir	2	8"	10"	18"	17'-5"
57	*	Top Chord	Douglas Fir	2	8"	10"	18"	17'-5"
58	*	Bolton Chord	Douglas Fir	2	8"	10"	26"	23'-7"
59	*	Bolton Chord	Douglas Fir	2	8"	10"	26"	23'-7"
60	*	Bolton Chord	Douglas Fir	4	8"	10"	28"	26'-10"
61	*	Top Chord	Douglas Fir	2	8"	1'	26"	24'-1"
62	*	Top Chord	Douglas Fir	2	8"	1'	26"	24'-1"
63	*	Top Chord	Douglas Fir	4	8"	1'	30"	28'-2"
64	*	Web	Douglas Fir	4	10"	6"	4"	3'-3"
65	*	Web	Douglas Fir	4	10"	6"	8"	7'-2"
66	*	Web	Douglas Fir	4	10"	6"	2'	1'-4"
67	*	King Post	Douglas Fir	1	10"	8"	5'	3'-10"
68	*	King Post	Douglas Fir	1	10"	8"	5'	3'-10"
69	*	Web	Douglas Fir	1	10"	8"	7'	6'-1"
70	*	Web	Douglas Fir	1	10"	8"	7'	6'-1"
71	*	Web	Douglas Fir	1	10"	8"	7'	6'-1"
72	*	Web	Douglas Fir	1	10"	8"	7'	6'-1"
73	*	Web	Douglas Fir	2	10"	8"	10"	9'-3"
74	*	Web	Douglas Fir	2	10"	8"	10"	9'-3"
75	*	Post	Douglas Fir	2	10"	10"	10"	8'-1"
76	*	Post	Douglas Fir	2	10"	10"	10"	8'-1"
77	*	Post	Douglas Fir	4	9 1/2"	9 1/2"	8'	8'-2"
78	*	Bolton Chord	Douglas Fir	1	10"	10"	28"	26'-10"
79	*	Bolton Chord	Douglas Fir	1	10"	10"	28"	26'-10"
80	*	Bolton Chord	Douglas Fir	1	10"	10"	28"	26'-10"
81	*	Bolton Chord	Douglas Fir	1	10"	10"	28"	26'-10"
82	*	Header	Douglas Fir	1	10"	1'	20"	19'-5"
83	*	Header	Douglas Fir	1	10"	1'	20"	19'-5"
84	*	Top Chord	Douglas Fir	2	10"	1'	30"	28'-2"
85	*	Top Chord	Douglas Fir	2	10"	1'-2"	30"	28'-2"
Sum Total:				393				



THE ENGINEERING ADVICE, OPINIONS, AND RECOMMENDATIONS IN THIS DRAWING ARE THOSE OF THE LICENSED PROFESSIONAL ENGINEER WHOSE STAMP APPEARS HEREIN, AND NOT THOSE OF VERMONT TIMBER WORKS, INC.

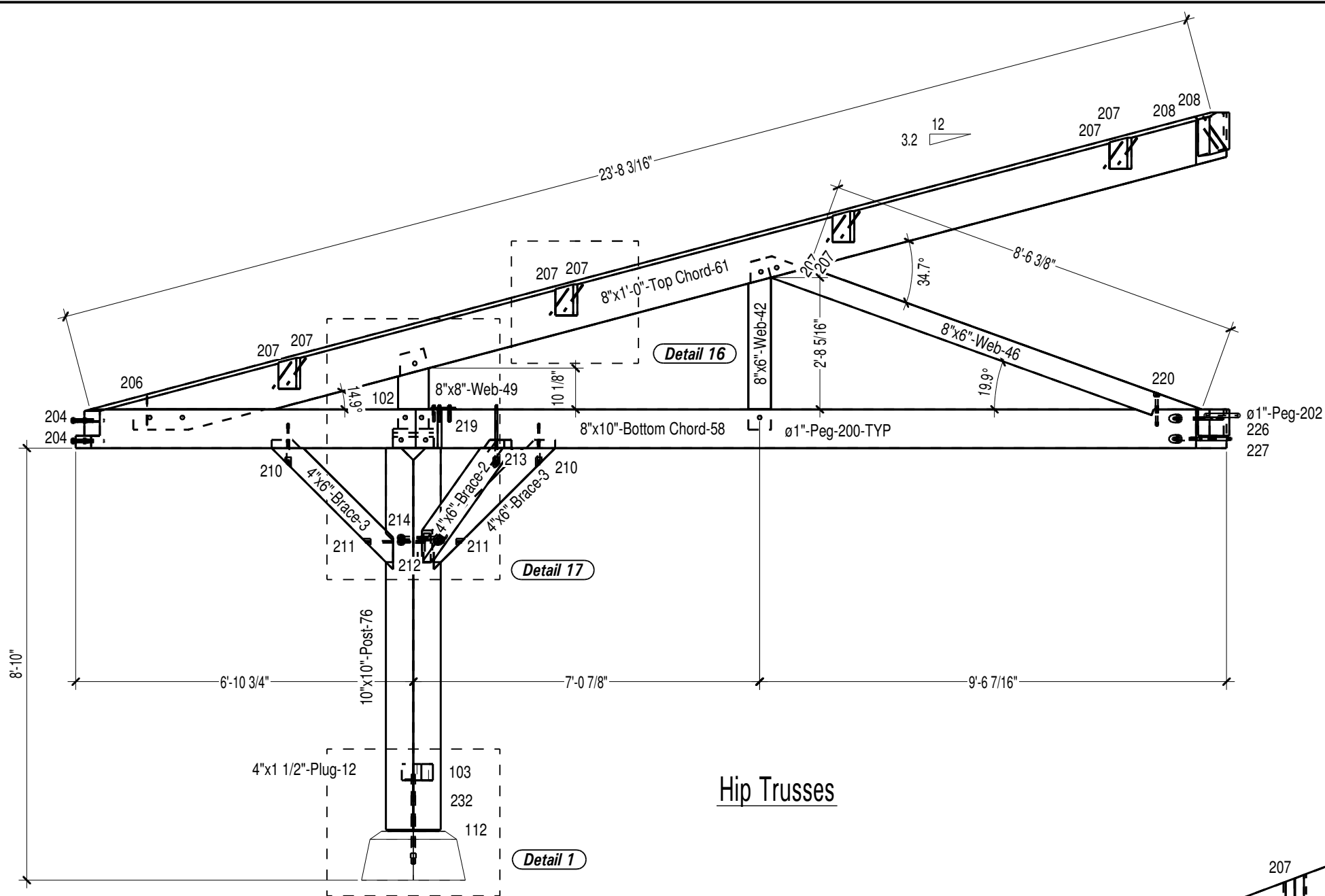
Framing Plan  
Bent Profile

Project: Cadwalader Picnic Pavilion  
Timber Frame  
Trenton, NJ

Drawn By: df  
Checked By: xx  
Scale: 1/4" = 1'-0"  
Date: 02-22-11  
Plot Date: 02-22-11

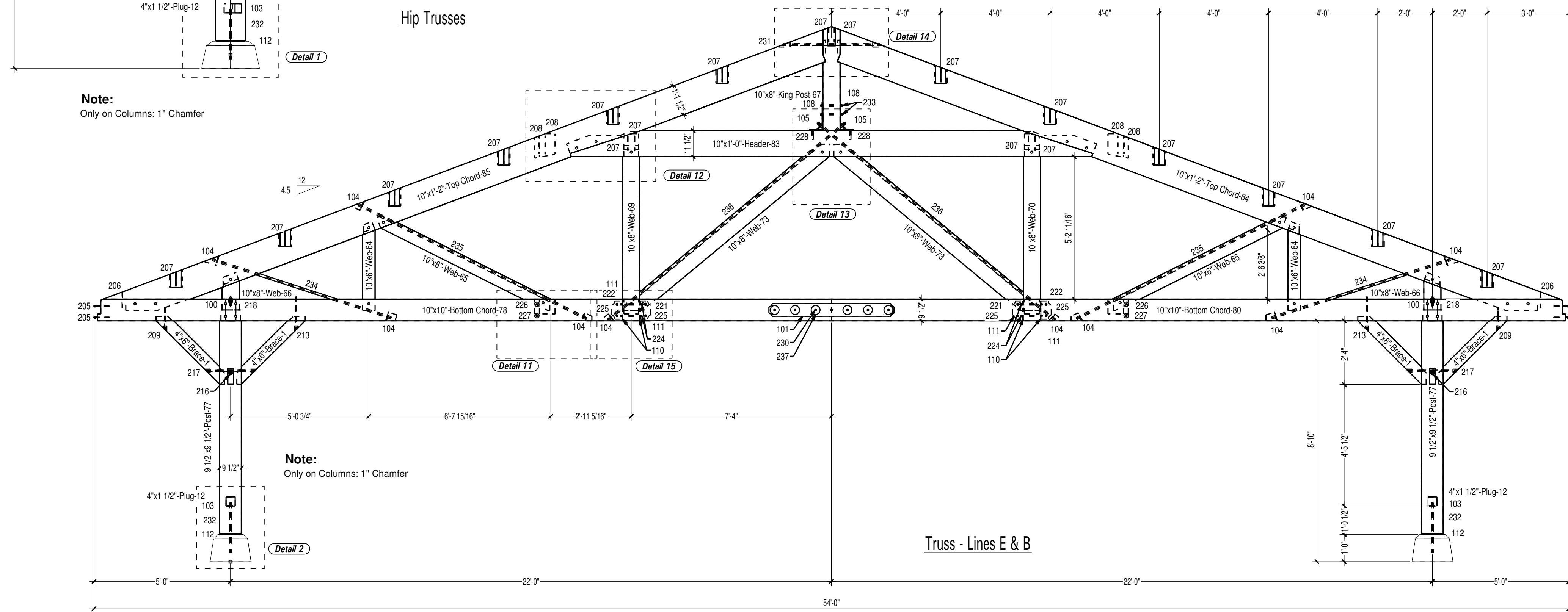
REVISIONS	BY	CHECKED BY
XX/XX	XX	XX

SHEET  
**F-1**  
COPYRIGHT VERMONT TIMBER WORKS, INC. THIS DRAWING MAY BE UTILIZED ONLY BY VTW FOR THE WORK SHOWN HEREIN AT THE SITE SPECIFIED. ANY OTHER USE OF THIS DRAWING INCLUDING, WITHOUT LIMITATION, ANY REPRODUCTION OR ALTERATION OF THIS ARCHITECTURAL WORK WITHOUT THE PRIOR WRITTEN APPROVAL OF VERMONT TIMBER WORKS, INC. IS A VIOLATION OF LAW AND PROHIBITED.



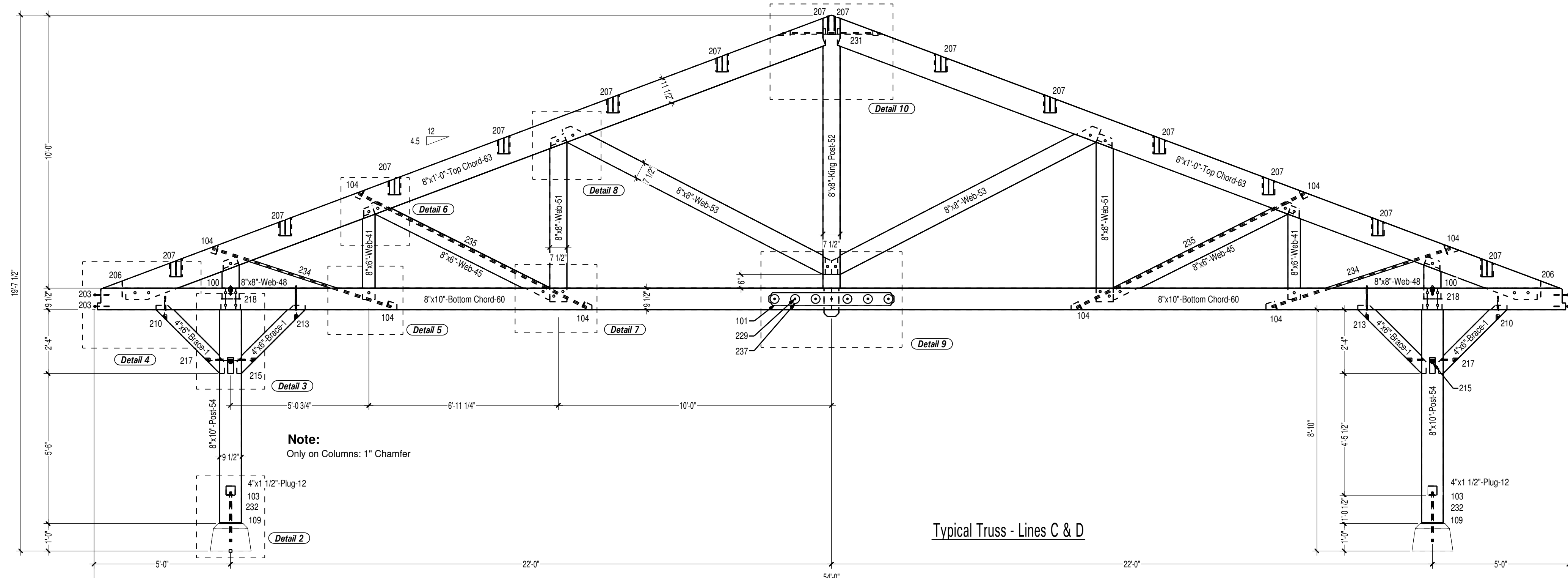
Hip Trusses

Note:  
Only on Columns: 1" Chamfer



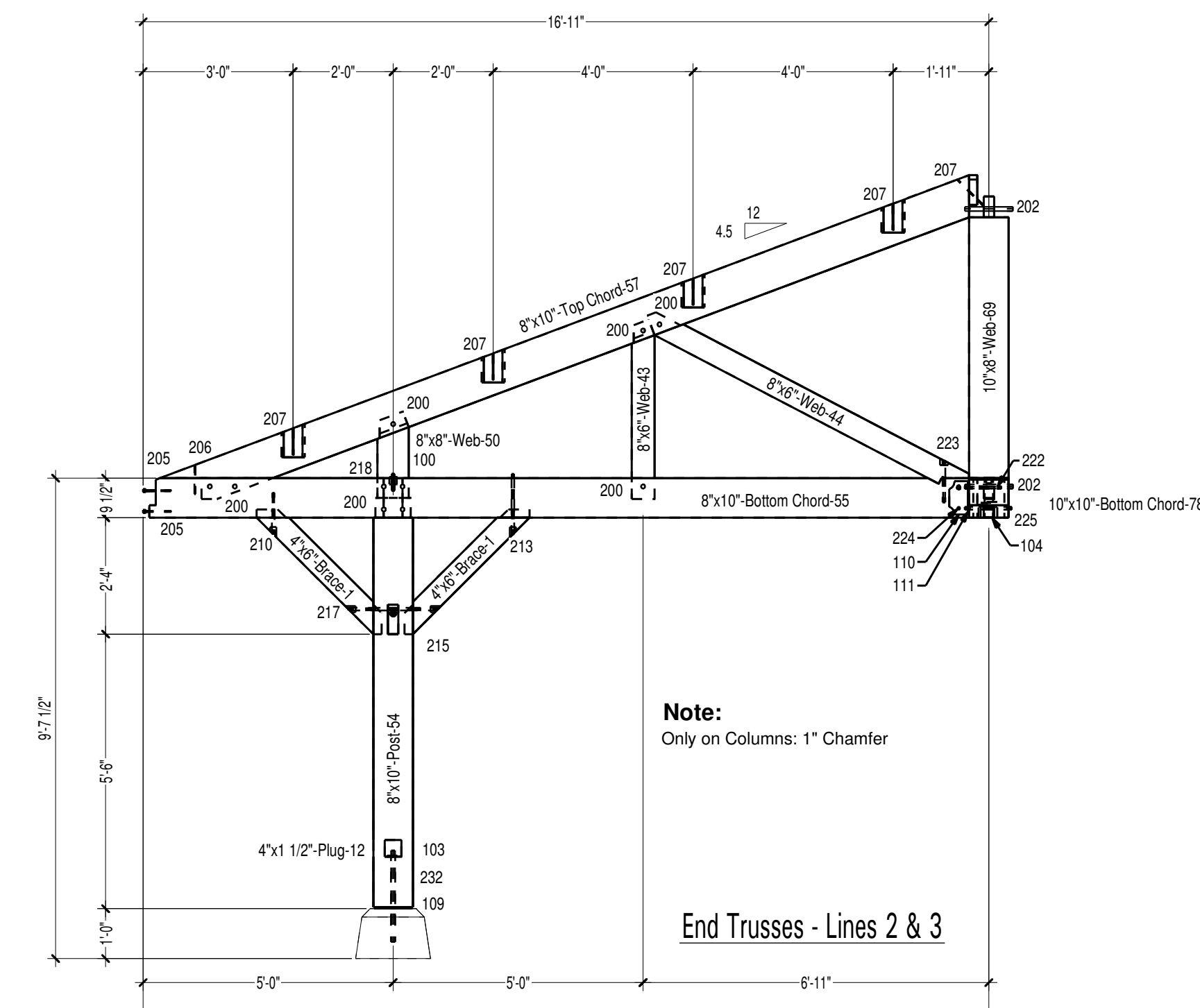
Truss - Lines E & B

Note:  
Only on Columns: 1" Chamfer



Typical Truss - Lines C & D

Note:  
Only on Columns: 1" Chamfer



End Trusses - Lines 2 & 3

Note:  
Only on Columns: 1" Chamfer

**General Notes:**

- Timbers to Douglas Fir #1 & Better S4S
- Pegs to be 1" Oak
- All edges to have 1/2" chamfer, except columns will have a 1" chamfer.
- All chamfers will be held back +/- 2 3/4" from every intersection.
- One coat of stain, oil or urethane to be shop applied on all sides.
- All Bolts to be 3/4" zinc coated Grade A307.
- All Steel to be A36 and to be shop primed flat black.
- All Steel base plates and anchor rods to be hot-dip galvanized.
- All other Steel to have flat black finish coat.
- Install anchor rods with HiHi Epoxy Adhesive or equivalent.
- Install per manufactures specifications.
- Conduit locations to be determined. Final locations of conduit to be reviewed by Vermont Timber Works and Fire Tower prior to drilling.

Filename 3D: Cadwalader Picnic Pavilion 3D.3d  
 Output date 3D: 2/4/2011  
 Actual date: 2/7/2011  
 User name:

Customer: City of Trenton  
 Project number:

Filename 3D: Cadwalader Picnic Pavilion 3D.3d  
 Output date 3D: 2/16/2011  
 Actual date: 2/16/2011  
 User name:

Customer: City of Trenton  
 Project number:

Project description:

No.	PL	Name	Material	Qty	List width (inch)	List height (inch)	List Length (inch)	Real Length (inch)
100	Plate	Steel	12	1/4"	1 1/2"	2"	2"	2"
101	Plate	Steel	8	3/8"	5 1/2"	4"	4"	4"
102	Plate	Steel	4	3/8"	1' - 2 3/4"	1' - 3"	1' - 3"	1' - 3"
103	Plate	Steel	16	3"	1/4"	3"	3"	3"
104	Plate	Steel	36	3 1/2"	3/8"	4"	4"	4"
105	Plate	Steel	2	4"	1/2"	4"	4"	4"
106	Plate	Steel	2	4"	1/2"	4"	4"	4"
107	Plate	Steel	2	4"	1' - 1/2"	6"	6"	6"
108	Plate	Steel	2	4"	1' - 1/2"	6"	6"	6"
109	Plate	Steel	8	7"	3/8"	9"	9"	9"
110	Plate	Steel	8	8"	1/4"	5"	5"	5"
111	Plate	Steel	8	8"	4 1/2"	8"	8"	8"
112	Plate	Steel	8	9"	3/8"	9"	9"	9"
Sum: Total				116				

Project description:

No.	PL	Name	Material	Qty	List width (inch)	List height (inch)	List Length (inch)	Real Length (inch)
200	Peg	Birch /	25	1/4"	1"	1"	8"	8"
201	Peg	Birch /	25	1/4"	1"	1"	8"	8"
202	Peg	Birch /	25	1/4"	1"	1"	10"	10"
203	Log Hog	Steel	24	1/4"	1/4"	1/4"	6"	7"
204	Log Hog	Steel	32	1/4"	1/4"	1/4"	6"	7"
205	Log Hog	Steel	24	1/4"	1/4"	1/4"	6"	7"
206	Log Hog	Steel /	6	2 1/4"	1/4"	1/4"	7"	7"
207	Log Hog	Steel /	6	2 1/4"	1/4"	1/4"	8"	8"
208	Log Hog	Steel /	6	1/4"	1/4"	1/4"	11"	11"
209	Lag	Steel	4	1/2"	1/2"	1/2"	8"	10"
210	Lag	Steel	16	1/2"	1/2"	1/2"	8"	10"
211	Lag	Steel	8	1/2"	1/2"	1/2"	10"	11"
212	RL Thread	Steel	4	1/2"	1/2"	1/2"	1"	1"
213	RL Thread	Steel	44	1/2"	1/2"	1/2"	1"	1"
214	RL Thread	Steel	4	1/2"	1/2"	1"	1"	1"
215	RL Thread	Steel	8	1/2"	1/2"	1"	1"	1"
216	RL Thread	Steel	4	1/2"	1/2"	1"	1"	1"
217	RL Thread	Steel	12	1/2"	1/2"	1"	1"	1"
218	Lag	Steel	48	5/8"	5/8"	5/8"	3"	4"
219	Lag	Steel	28	5/8"	5/8"	5/8"	3"	4"
220	Lag	Steel	8	5/8"	5/8"	5/8"	7"	8"
221	Lag	Steel	4	5/8"	5/8"	5/8"	8"	9"
222	Lag	Steel	4	5/8"	5/8"	5/8"	8"	9"
223	Lag	Steel	8	5/8"	5/8"	5/8"	9"	10"
224	Bolt	Steel /	16	8	5/8"	5/8"	10"	10"
225	Bolt	Steel	8	5/8"	5/8"	5/8"	10"	11"
226	Lag	Steel	4	5/8"	5/8"	1"	1"	1"
227	RL Thread	Steel	4	5/8"	5/8"	1"	1"	1"
228	Lag	Steel	4	3/4"	3/4"	3/4"	4"	4"
229	Bolt	Steel /	19	14	3/4"	3/4"	9"	9"
230	Bolt	Steel /	19	14	3/4"	3/4"	11"	11"
231	RL Thread	Steel	6	3/4"	3/4"	3"	3"	3"
232	RL Thread	Steel	16	7/8"	7/8"	1"	1"	1"
233	Bolt	Steel /	25	4	1"	1"	10"	10"
234	Rod	Steel /	25	8	1"	1"	6"	6"
235	Rod	Steel /	25	8	1"	1"	9"	9"
236	Rod	Steel /	25	4	1"	1"	11"	11"
237	Shear Plate	Steel /	182	48	4"	4"	11"	11"
Sum: Total				882				



THE ENGINEERING ADVICE, OPINIONS, AND RECOMMENDATIONS IN THIS DRAWING ARE THOSE OF THE LICENSED PROFESSIONAL ENGINEER WHOSE STAMP APPEARS HEREIN, AND NOT THOSE OF VERMONT TIMBER WORKS, INC.

Bent Profiles

Project: Cadwalader Picnic Pavilion  
 Timber Frame  
 Trenton, NJ

Drawn By: df  
 Checked By: XX  
 Scale: 3/8" = 1'-0"  
 Date: 02-22-11  
 Plot Date: 02-22-11

REVISIONS	BY	CHECKED BY
XX/XX	XX	XX

SHEET  
**F-2**

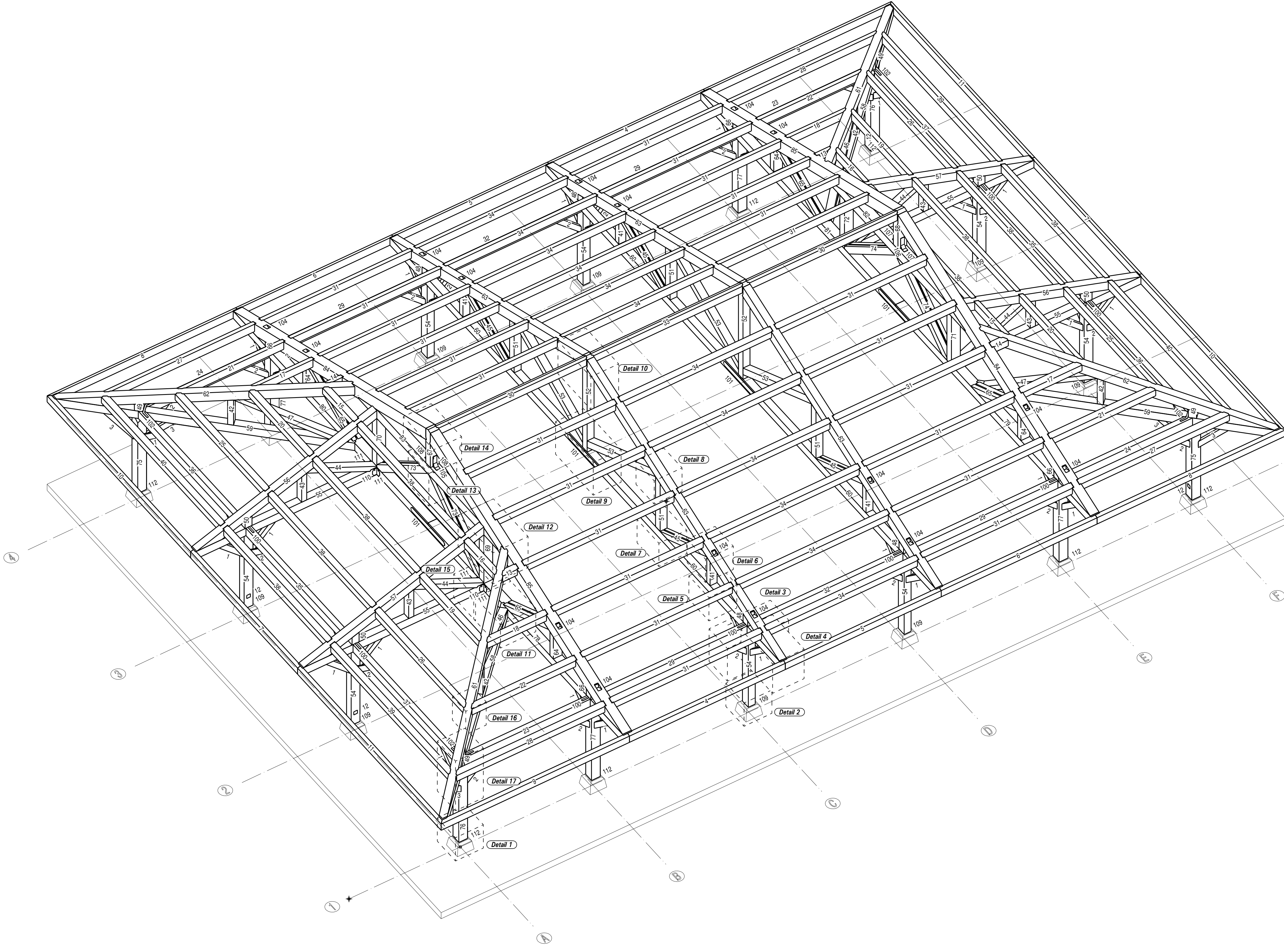
COPYRIGHT VERMONT TIMBER WORKS, INC. THIS DRAWING MAY BE UTILIZED ONLY BY ITW FOR THE WORK SHOWN HEREIN AT THE SITE SPECIFIED. ANY OTHER USE OF THIS DRAWING INCLUDING, WITHOUT LIMITATION, ANY REPRODUCTION OR ALTERATION OF THIS ARCHITECTURAL WORK, WITHOUT THE PRIOR WRITTEN APPROVAL OF VERMONT TIMBER WORKS, INC. IS A VIOLATION OF LAW AND PROHIBITED.

Filename 3D: Cadwalader Picnic Pavilion 3D.3d  
 Output date 3D: 2/4/2011  
 Actual date: 2/7/2011  
 User name:

Customer: City of Trenton  
 Project number:

Project description:

No. Pl	Name	Material	Quantity	List width (inch)	List height (inch)	List length (inch)	Real Length (inch)
100	Plate	Steel	12	1/4"	1 1/2"	2"	2"
101	Plate	Steel	8	3/8"	5 1/2"	4'-7"	4'-7"
102	Plate	Steel	4	3/8"	1'-2 3/4"	1'-3"	1'-3"
103	Plate	Steel	16	3"	1/4"	3"	3"
104	Plate	Steel	36	3/8"	3/8"	4"	4"
105	Plate	Steel	2	1/2"	1/2"	4"	4"
106	Plate	Steel	2	1/2"	1/2"	4"	4"
107	Plate	Steel	2	1/2"	1/2"	6"	6"
108	Plate	Steel	2	1/2"	1/2"	6"	6"
109	Plate	Steel	8	7"	3/8"	9"	9"
110	Plate	Steel	8	7"	3/8"	9"	9"
111	Plate	Steel	8	8"	4 1/2"	9"	9"
112	Plate	Steel	8	8"	3/8"	9"	9"
Sum: Total			116				



Filename 3D: Cadwalader Picnic Pavilion 3D.3d  
 Output date 3D: 2/16/2011  
 Actual date: 2/16/2011  
 User name:

Customer: City of Trenton  
 Project number:

Project description:

No. Pl	Name	Material	Quantity	List width (inch)	List height (inch)	List length (inch)	Real Length (inch)
1	Brace	Douglas Fir	28	4"	6"	5'	3'-6"
2	Brace	Douglas Fir	28	4"	6"	5'	3'-6"
3	Brace	Douglas Fir	8	4"	6"	5'	3'-6"
4	Purlin	Douglas Fir	2	4"	10"	15'	14'
5	Purlin	Douglas Fir	2	4"	10"	15'	14'
6	Purlin	Douglas Fir	2	4"	10"	15'	14'
7	Purlin	Douglas Fir	2	4"	10"	15'	14'-8"
8	Purlin	Douglas Fir	2	4"	10"	15'	15'-11"
9	Purlin	Douglas Fir	2	4"	10"	15'	15'-11"
10	Purlin	Douglas Fir	2	4"	10"	22'	19'-8"
11	Purlin	Douglas Fir	2	4"	10"	22'	19'-8"
12	Plug	Douglas Fir	16	4"	1 1/2"	4"	4"
13	Purlin	Douglas Fir	2	6"	10"	2'	1'-5"
14	Purlin	Douglas Fir	2	6"	10"	2'	1'-5"
15	Purlin	Douglas Fir	2	6"	10"	6"	4'-3"
16	Purlin	Douglas Fir	2	6"	10"	6"	4'-3"
17	Purlin	Douglas Fir	2	6"	10"	6"	5'-5"
18	Purlin	Douglas Fir	2	6"	10"	6"	5'-5"
19	Purlin	Douglas Fir	2	6"	10"	8'	8'-3"
20	Purlin	Douglas Fir	2	6"	10"	8'	8'-3"
21	Purlin	Douglas Fir	2	6"	10"	8'	8'-5"
22	Purlin	Douglas Fir	2	6"	10"	8'	8'-5"
23	Connector	Douglas Fir	2	6"	10"	12'	11'-5"
24	Connector	Douglas Fir	2	6"	10"	12'	11'-5"
25	Purlin	Douglas Fir	2	6"	10"	14'	12'-3"
26	Purlin	Douglas Fir	2	6"	10"	14'	12'-3"
27	Purlin	Douglas Fir	2	6"	10"	14'	13'-5"
28	Purlin	Douglas Fir	2	6"	10"	14'	13'-5"
29	Connector	Douglas Fir	4	6"	10"	14'	13'-6"
30	Ridge	Douglas Fir	2	6"	10"	14'	13'-6"
31	Purlin	Douglas Fir	24	6"	10"	15'	13'-6"
32	Connector	Douglas Fir	2	6"	10"	16'	13'-6"
33	Ridge	Douglas Fir	1	6"	10"	16'	13'-6"
34	Purlin	Douglas Fir	12	6"	10"	15'	13'-7"
35	Connector	Douglas Fir	2	6"	10"	16'	14'-3"
36	Connector	Douglas Fir	2	6"	10"	16'	14'-3"
37	Connector	Douglas Fir	2	6"	10"	16'	14'-3"
38	Purlin	Douglas Fir	8	6"	10"	16'	14'-4"
39	Purlin	Douglas Fir	2	6"	10"	16'	15'-3"
40	Purlin	Douglas Fir	2	6"	10"	16'	16'-3"
41	Web	Douglas Fir	4	8"	6"	4'	3'-5"
42	Web	Douglas Fir	4	8"	6"	5'	3'-5"
43	Web	Douglas Fir	4	8"	6"	5'	3'-7"
44	Web	Douglas Fir	4	8"	6"	8'	7'-3"
45	Web	Douglas Fir	4	8"	6"	8'	7'-3"
46	Web	Douglas Fir	2	8"	6"	10'	9'-5"
47	Web	Douglas Fir	2	8"	6"	10'	9'-5"
48	Web	Douglas Fir	4	8"	6"	3'	1'-8"
49	Web	Douglas Fir	4	8"	6"	3'	1'-8"
50	Web	Douglas Fir	4	8"	8"	3'	1'-8"
51	Web	Douglas Fir	4	8"	8"	3'	1'-8"
52	King Post	Douglas Fir	2	8"	8"	12'	11'-2"
53	Web	Douglas Fir	4	8"	8"	12'	11'-2"
54	Post	Douglas Fir	8	8"	8"	10'	8'-2"
55	Bolton Chord	Douglas Fir	4	8"	10"	18'	15'-7"
56	Top Chord	Douglas Fir	2	8"	10"	18'	17'-5"
57	Top Chord	Douglas Fir	2	8"	10"	18'	17'-5"
58	Bolton Chord	Douglas Fir	2	8"	10"	23'-7"	23'-7"
59	Bolton Chord	Douglas Fir	2	8"	10"	23'-7"	23'-7"
60	Bolton Chord	Douglas Fir	4	8"	10"	26'	26'-10"
61	Top Chord	Douglas Fir	2	1"	26'	24'-1"	24'-1"
62	Top Chord	Douglas Fir	2	8"	1"	26'	24'-1"
63	Top Chord	Douglas Fir	4	8"	1"	30'	28'-2"
64	Web	Douglas Fir	4	10"	6"	4'	3'-2"
65	Web	Douglas Fir	4	10"	6"	4'	3'-2"
66	Web	Douglas Fir	4	10"	8"	2'	1'-4"
67	King Post	Douglas Fir	1	10"	8"	5'	3'-10"
68	King Post	Douglas Fir	1	10"	8"	5'	3'-10"
69	Web	Douglas Fir	1	10"	8"	7'	6'-1"
70	Web	Douglas Fir	1	10"	8"	7'	6'-1"
71	Web	Douglas Fir	1	10"	8"	7'	6'-1"
72	Web	Douglas Fir	1	10"	8"	7'	6'-1"
73	Web	Douglas Fir	2	10"	8"	9'	8'-3"
74	Web	Douglas Fir	2	10"	8"	9'	8'-3"
75	Post	Douglas Fir	2	10"	10"	10'	8'-1"
76	Post	Douglas Fir	2	10"	10"	10'	8'-1"
77	Post	Douglas Fir	4	9 1/2"	9 1/2"	8'	8'-2"
78	Bolton Chord	Douglas Fir	1	10"	10"	28'	26'-10"
79	Bolton Chord	Douglas Fir	1	10"	10"	28'	26'-10"
80	Bolton Chord	Douglas Fir	1	10"	10"	28'	26'-10"
81	Bolton Chord	Douglas Fir	1	10"	10"	28'	26'-10"
82	Header	Douglas Fir	1	10"	1"	28'	19'-5"
83	Header	Douglas Fir	1	10"	1"	20'	19'-5"
84	Top Chord	Douglas Fir	2	10"	1'-2"	30'	28'-2"
85	Top Chord	Douglas Fir	2	10"	1'-2"	30'	28'-2"
Sum: Total			389				

36 Fairbanks Road  
 North Springfield, Vermont  
 802.886.1917 - 802.886.6188 fax  
 www.vermonttimberworks.com

THE ENGINEERING ADVICE, OPINIONS, AND RECOMMENDATIONS IN THIS DRAWING ARE THOSE OF THE LICENSED PROFESSIONAL ENGINEER WHOSE STAMP APPEARS HEREIN, AND NOT THOSE OF VERMONT TIMBER WORKS, INC.

Isometric

Project: Cadwalader Picnic Pavilion  
 Timber Frame  
 Trenton, NJ

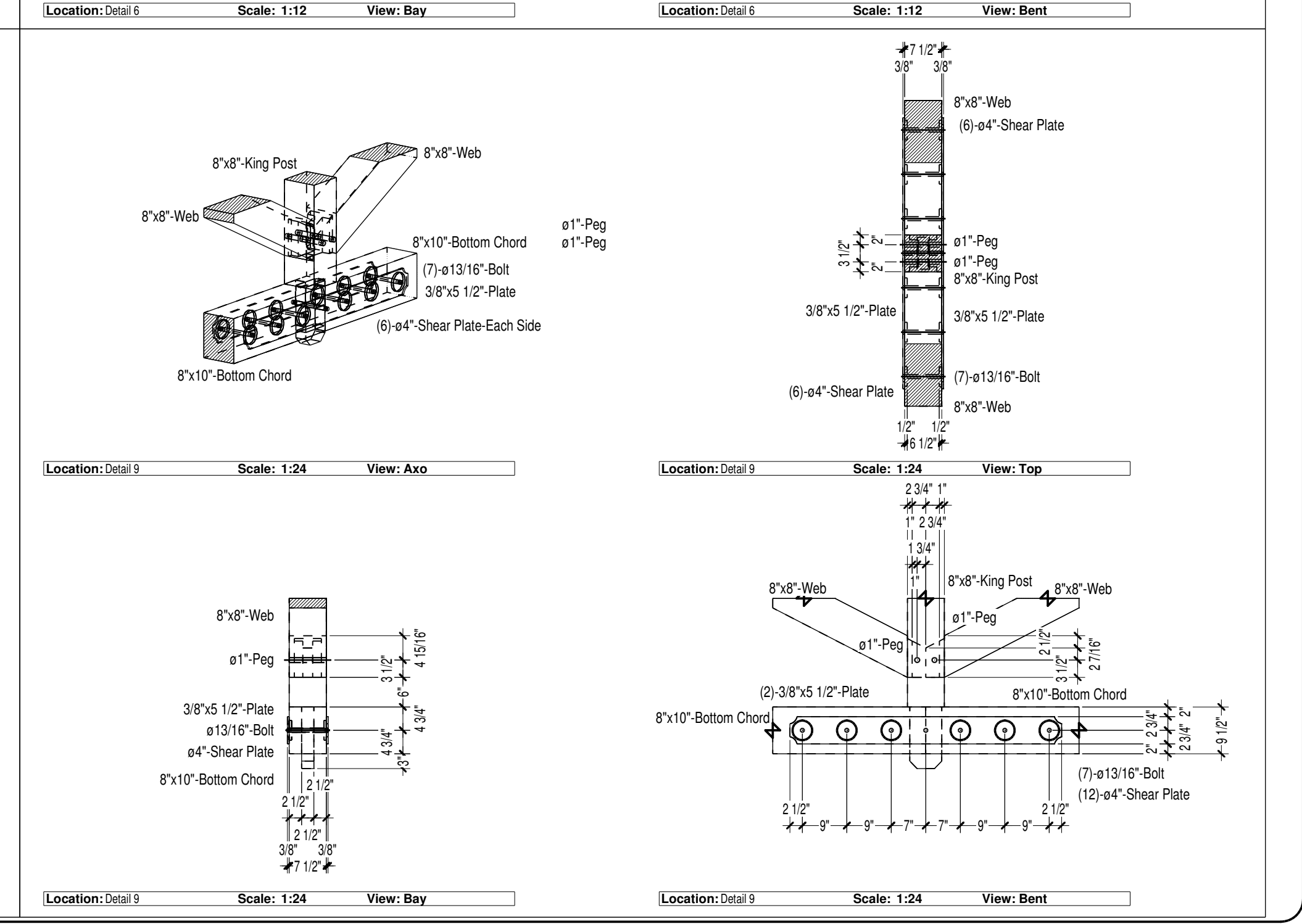
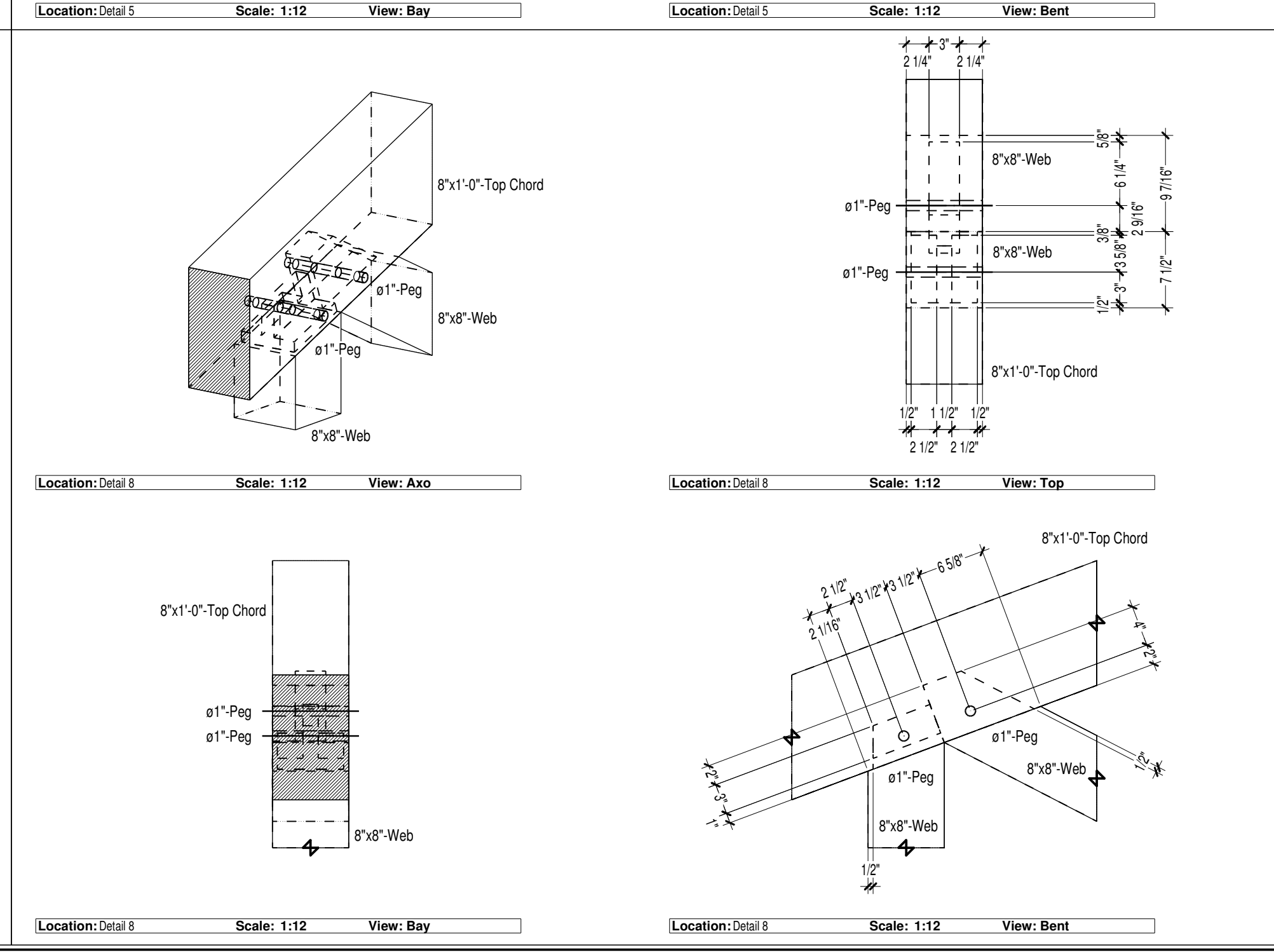
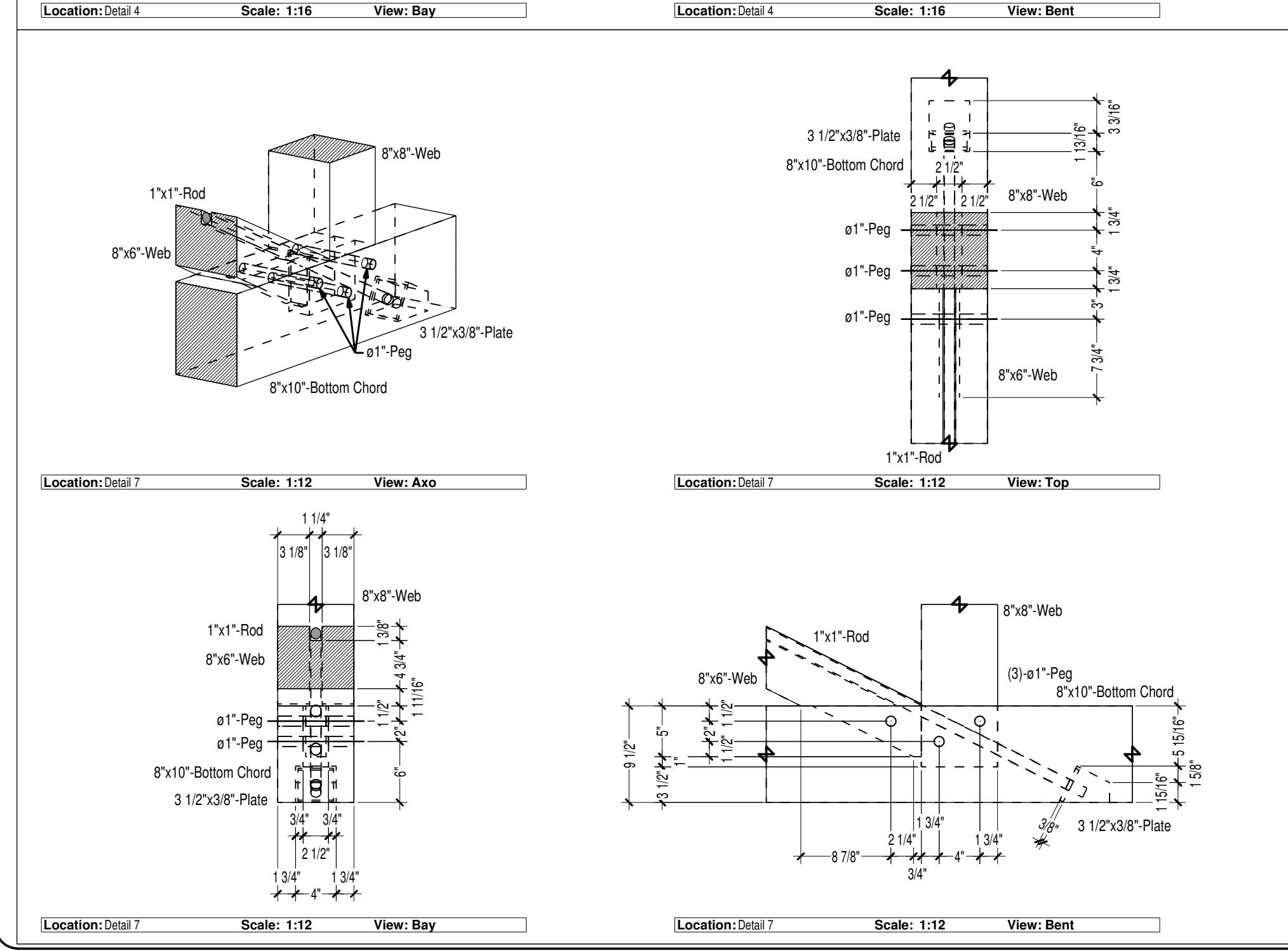
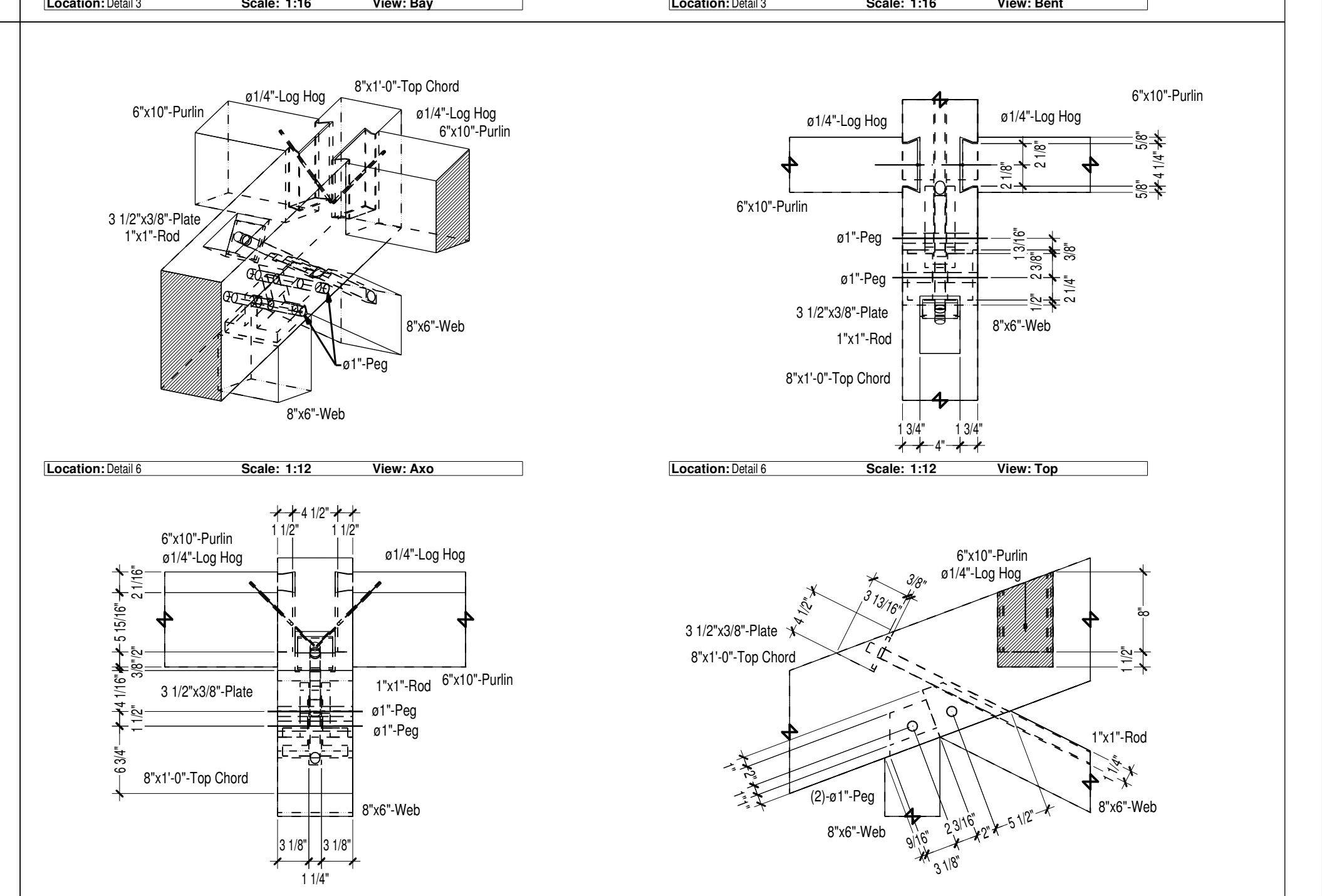
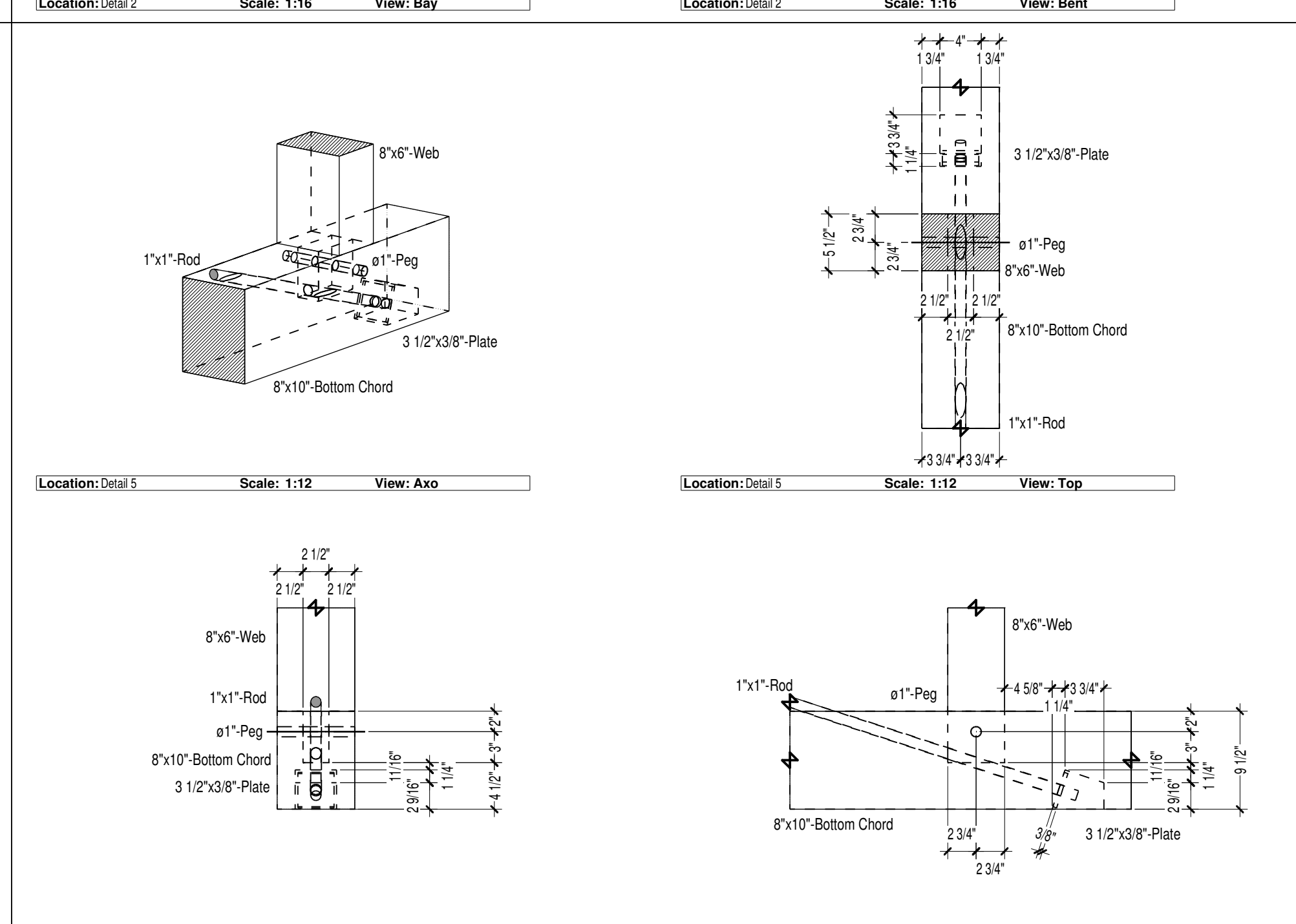
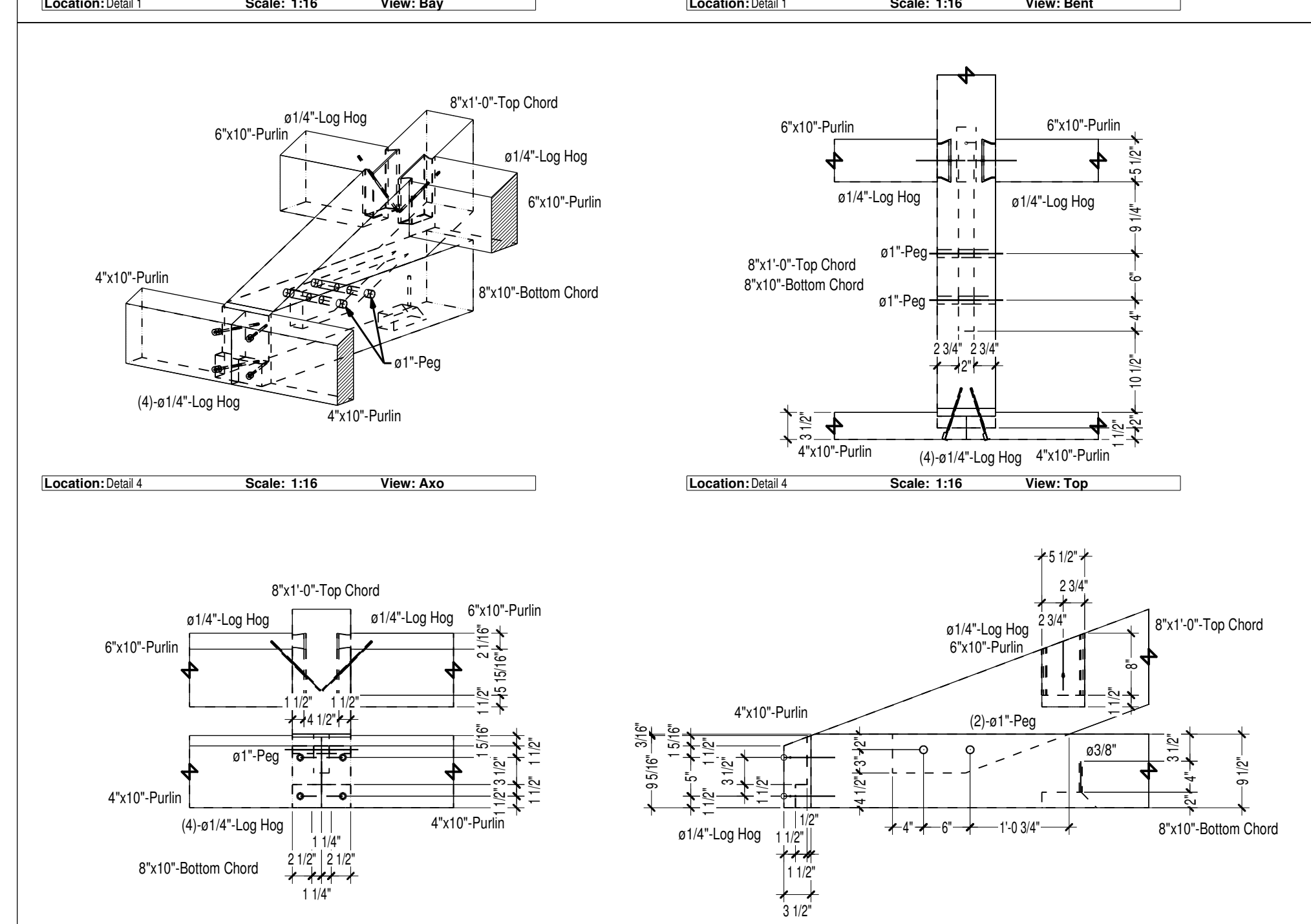
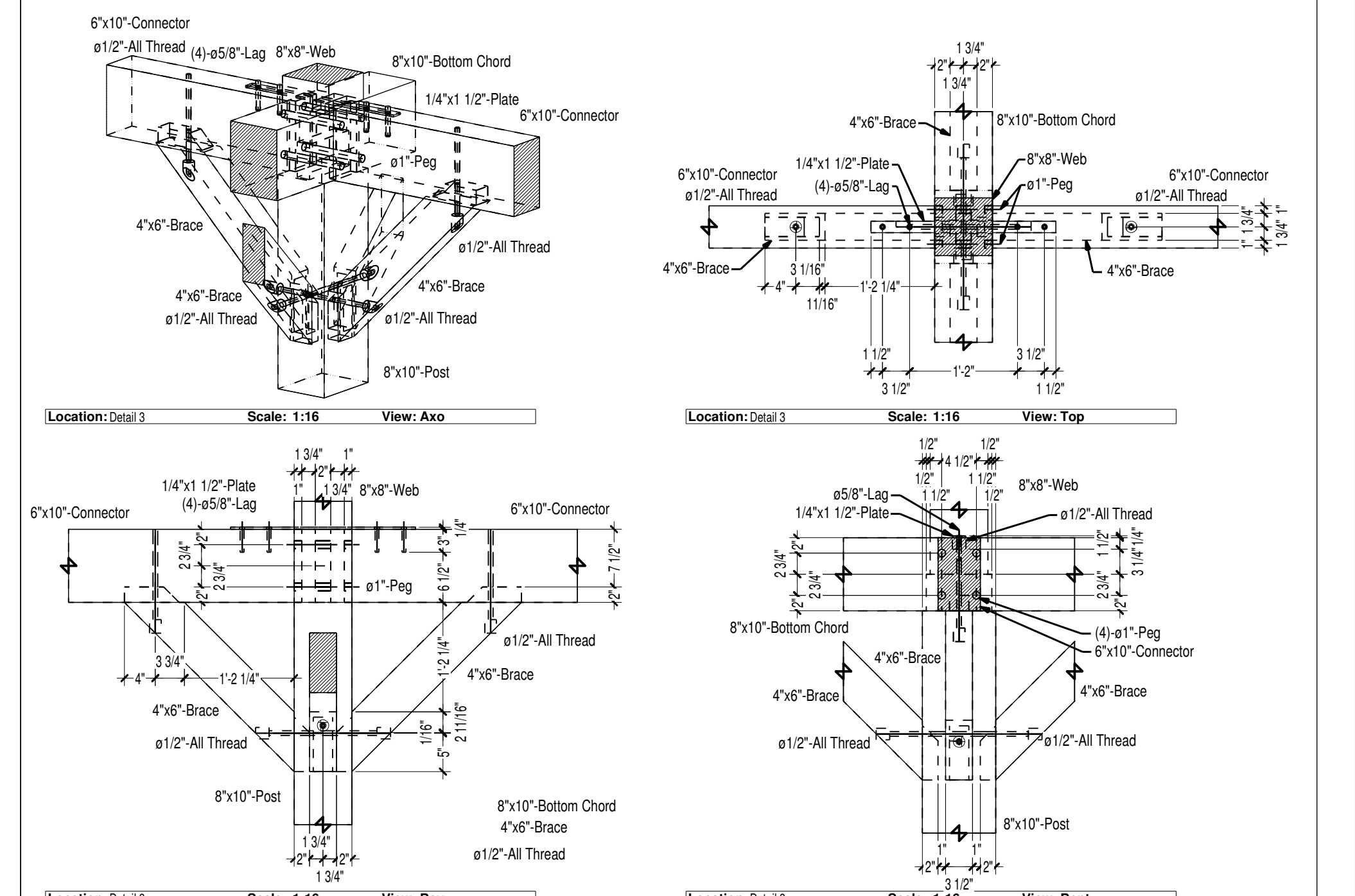
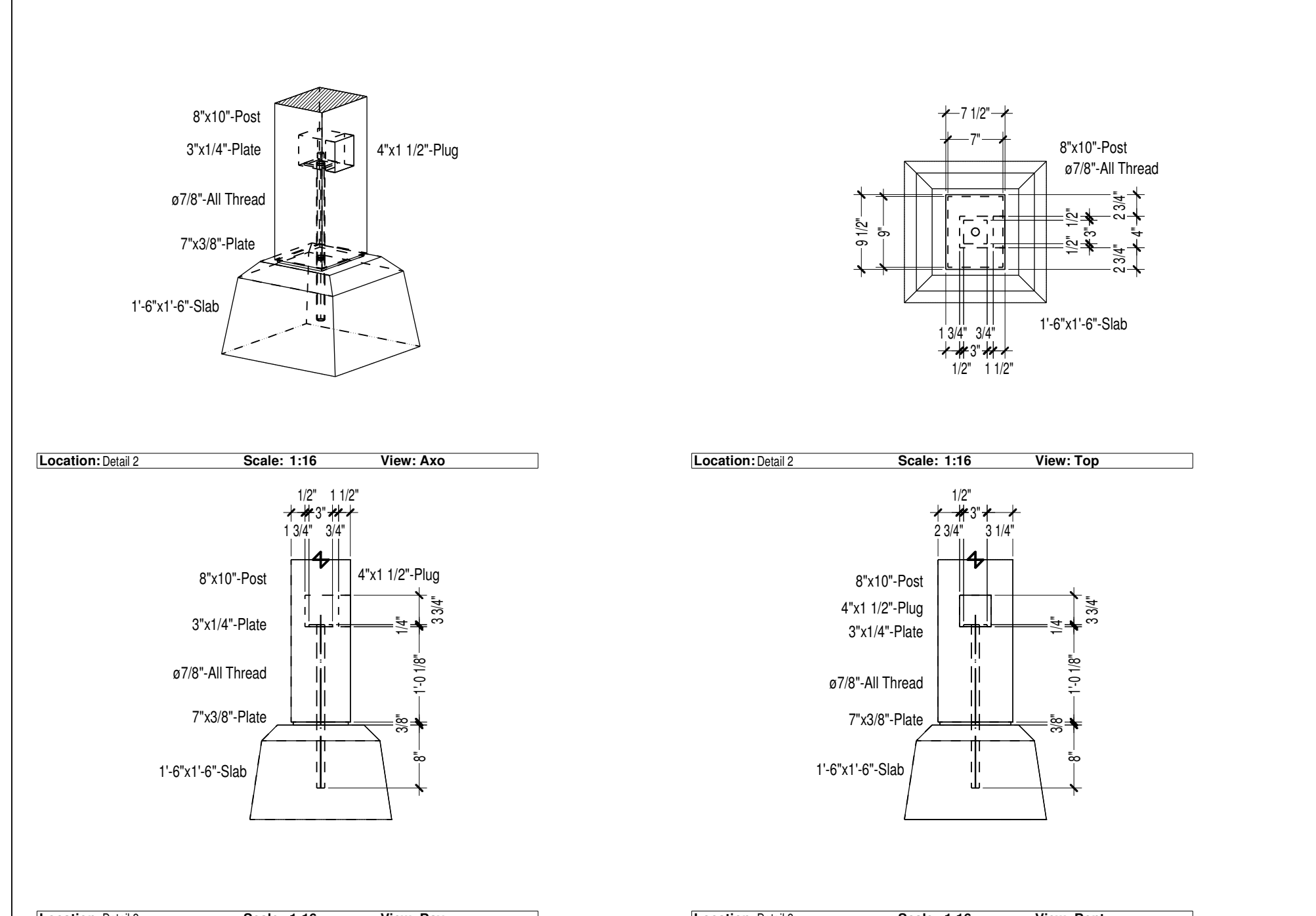
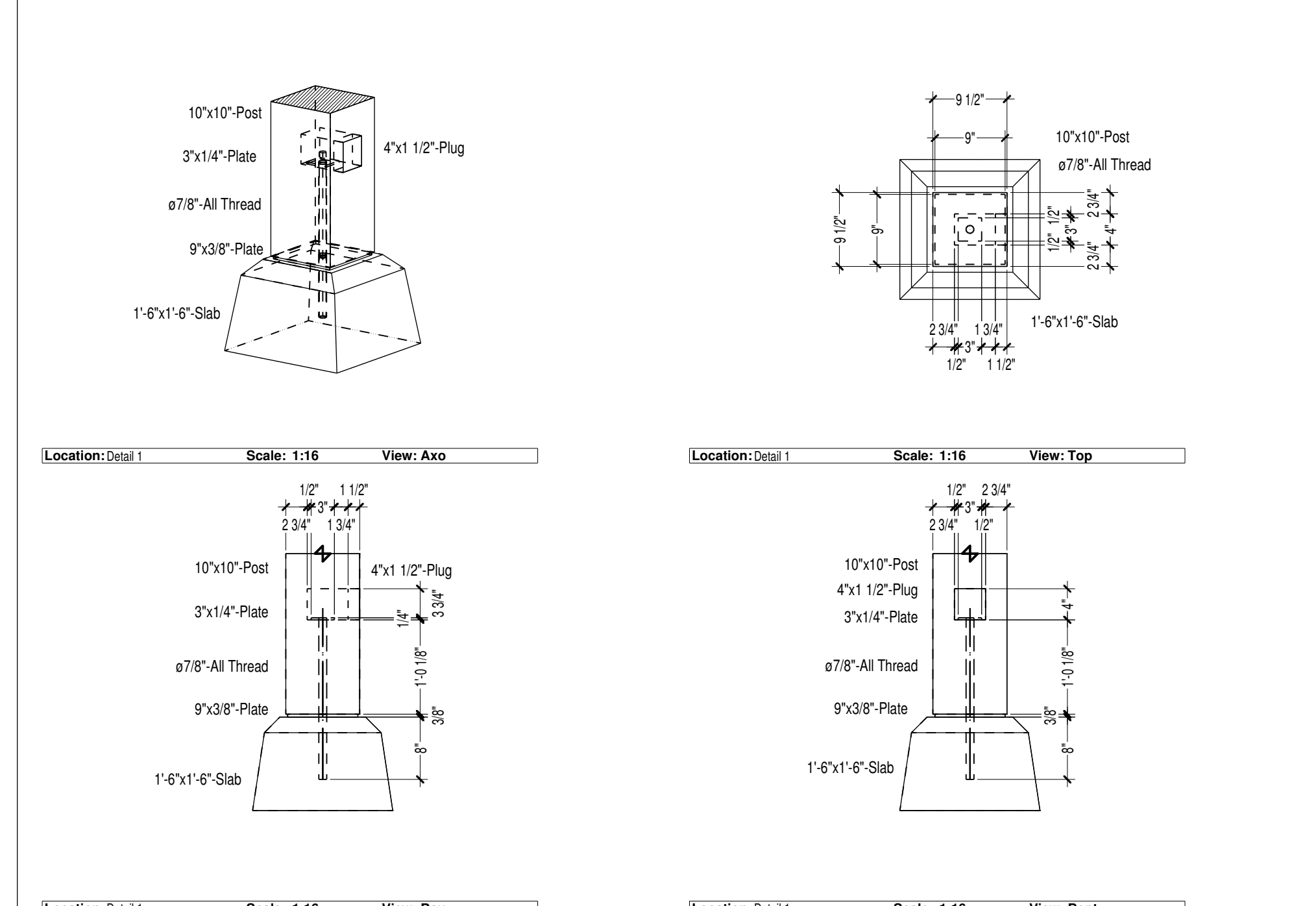
Drawn By: df  
 Checked By: XX  
 Scale: As Noted  
 Date: 02-22-11  
 Plot Date: 02-22-11

REVISIONS	BY	CHECKED BY
XX/XX	XX	XX


SHEET

**F-3**

COPYRIGHT VERMONT TIMBER WORKS, INC. THIS DRAWING MAY BE UTILIZED ONLY BY VTW FOR THE WORK SHOWN HEREIN AT THE SITE SPECIFIED. ANY OTHER USE OF THIS DRAWING INCLUDING, WITHOUT LIMITATION, ANY REPRODUCTION OR ALTERATION OF THIS ARCHITECTURAL WORK WITHOUT THE PRIOR WRITTEN APPROVAL OF VERMONT TIMBER WORKS, INC. IS A VIOLATION OF LAW AND PROHIBITED.



**VERMONT  
TIMBER  
WORKS**  
INCORPORATED

36 Fairbanks Road  
North Springfield, Vermont  
802.886.1917 - 802.886.6188 fax  
www.vermonttimberworks.com

THE ENGINEERING, ADVISE, OPINIONS, AND RECOMMENDATIONS IN THIS DRAWING ARE THOSE OF THE LICENSED PROFESSIONAL ENGINEER WHOSE STAMP APPEARS HEREIN, AND NOT THOSE OF VERMONT TIMBER WORKS, INC.

Details

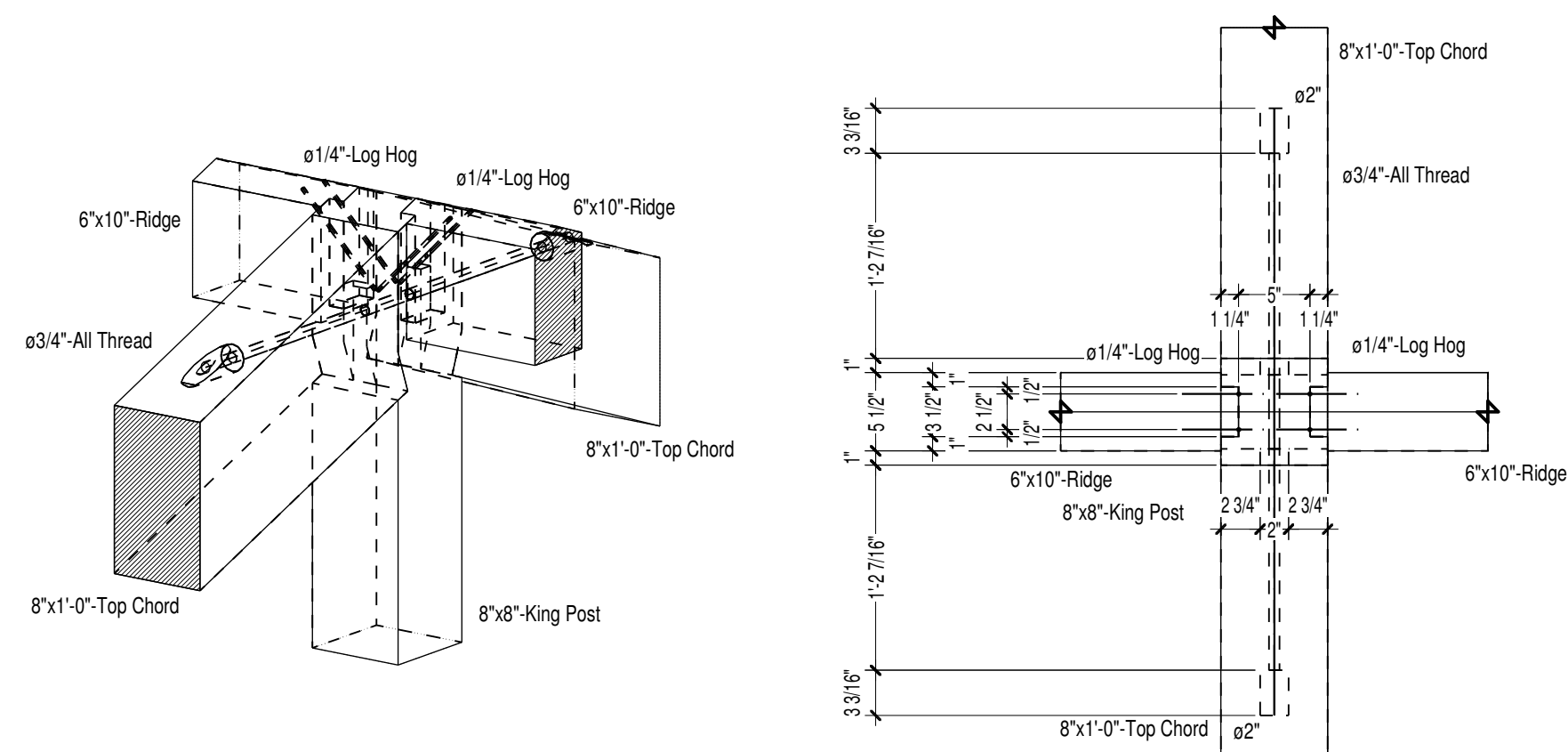
# Project: Cadwalader Picnic Pavilion Timber Frame Trenton, NJ

Drawn By: df  
Checked By: XX  
Scale: As Noted  
Date: 02-22-11  
Plot Date: 02-22-11

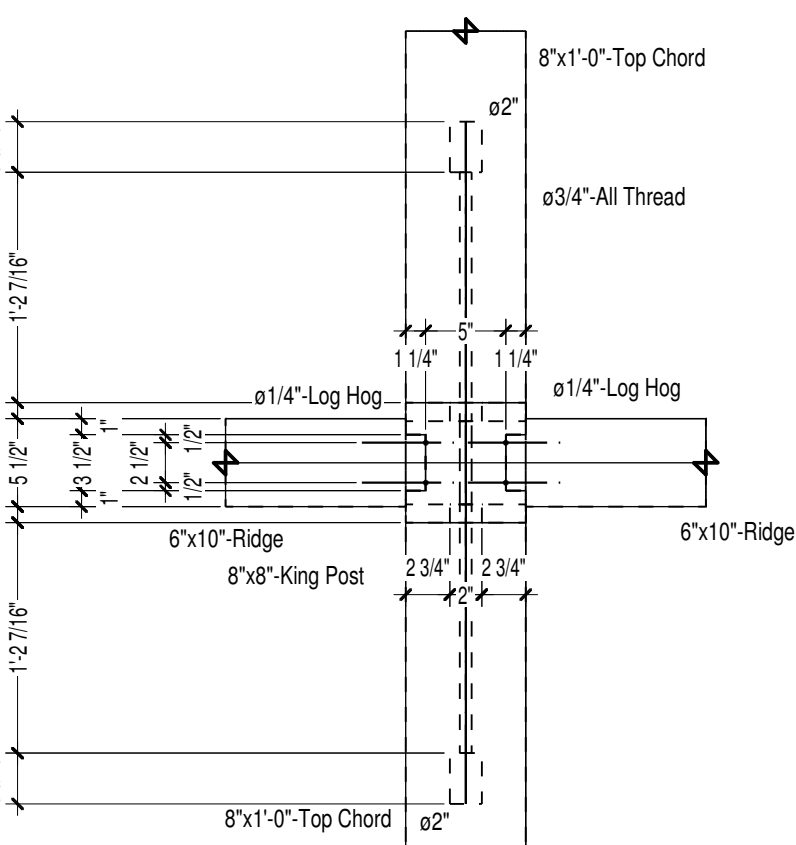
REVISIONS	BY	CHECKED BY
XX/XX	XX	XX

SHEET  
**F-4**

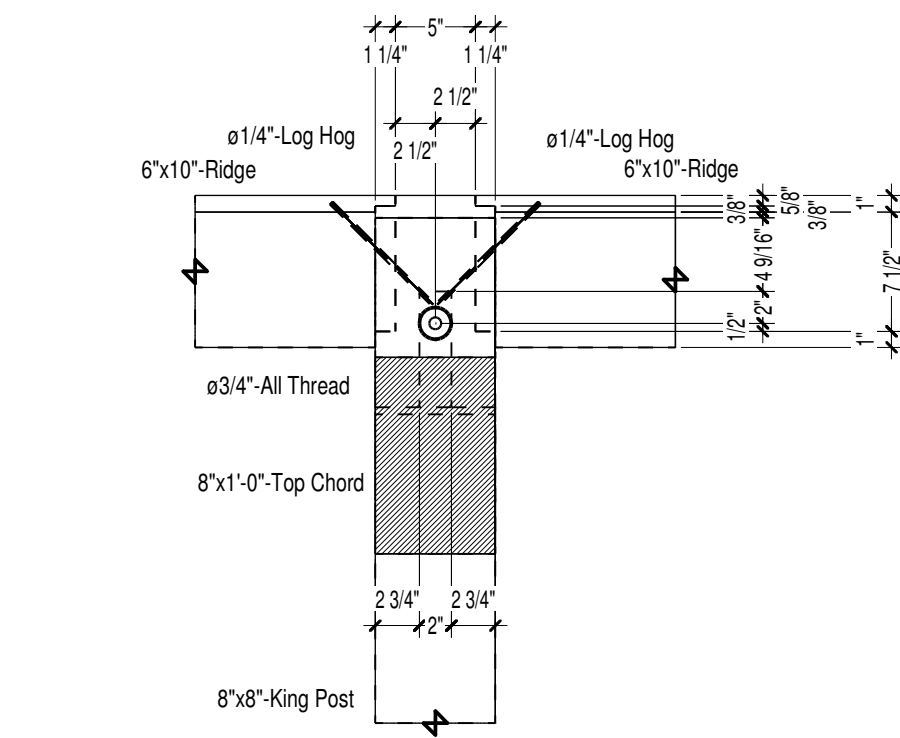
COPYRIGHT VERMONT TIMBER WORKS, INC.  
THIS DRAWING MAY BE UTILIZED ONLY BY BTW FOR THE WORK SHOWN HEREIN AT THE SITE SPECIFIED. ANY OTHER USE OF THIS DRAWING INCLUDING, WITHOUT LIMITATION, ANY REPRODUCTION OR ALTERATION OF THIS ARCHITECTURAL WORK, WITHOUT THE WRITTEN APPROVAL OF VERMONT TIMBER WORKS, INC. IS A VIOLATION OF LAW AND PROHIBITED.



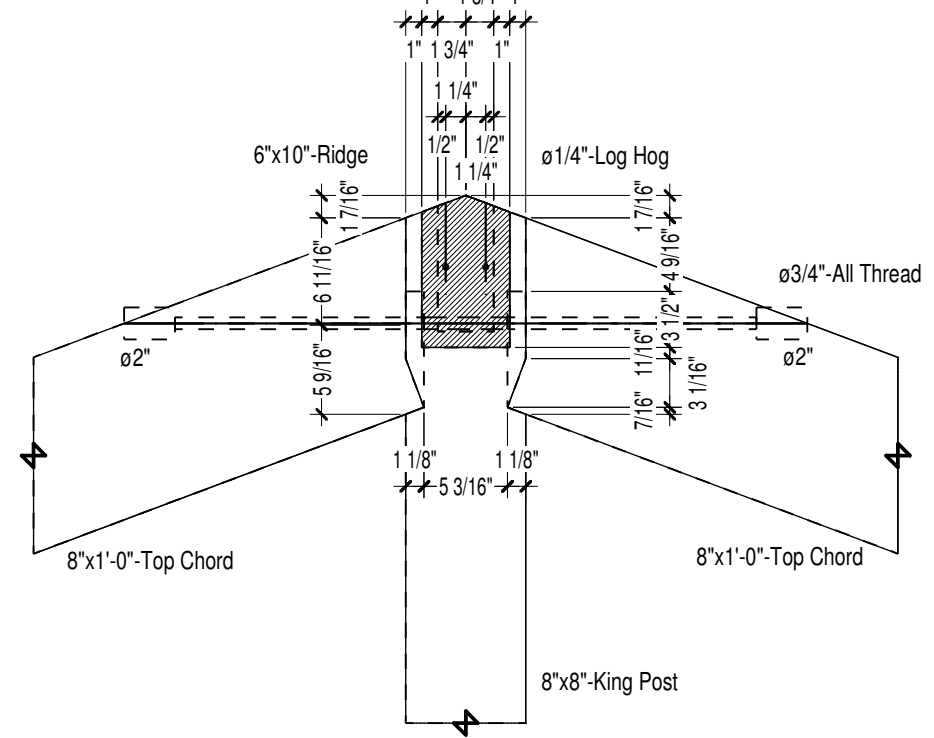
Location: Detail 10 Scale: 1:12 View: Axo



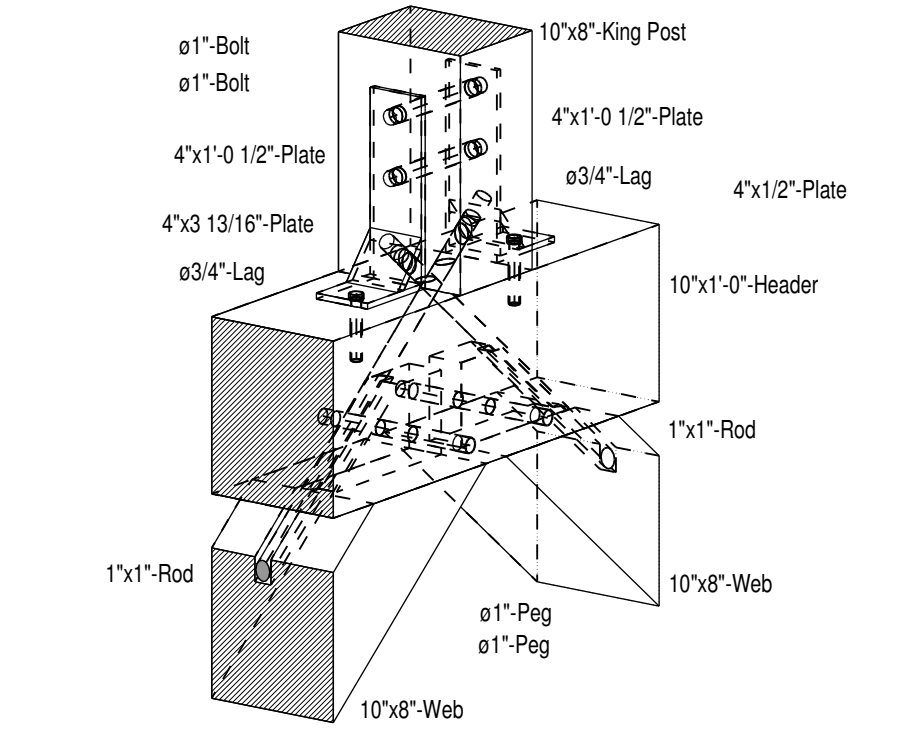
Location: Detail 10 Scale: 1:12 View: Top



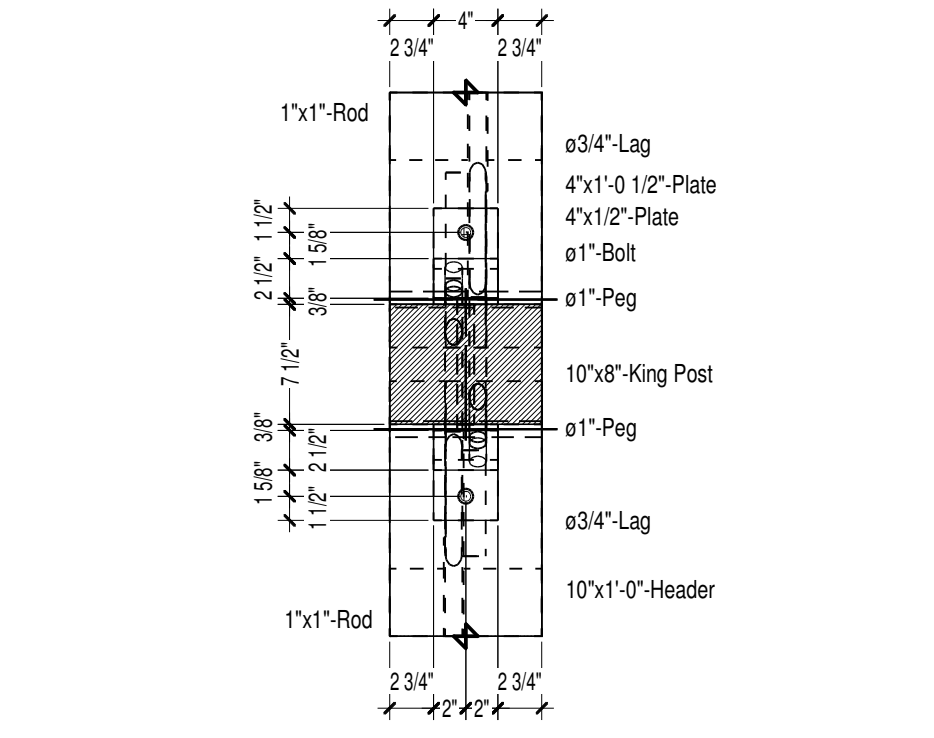
Location: Detail 10 Scale: 1:12 View: Bay



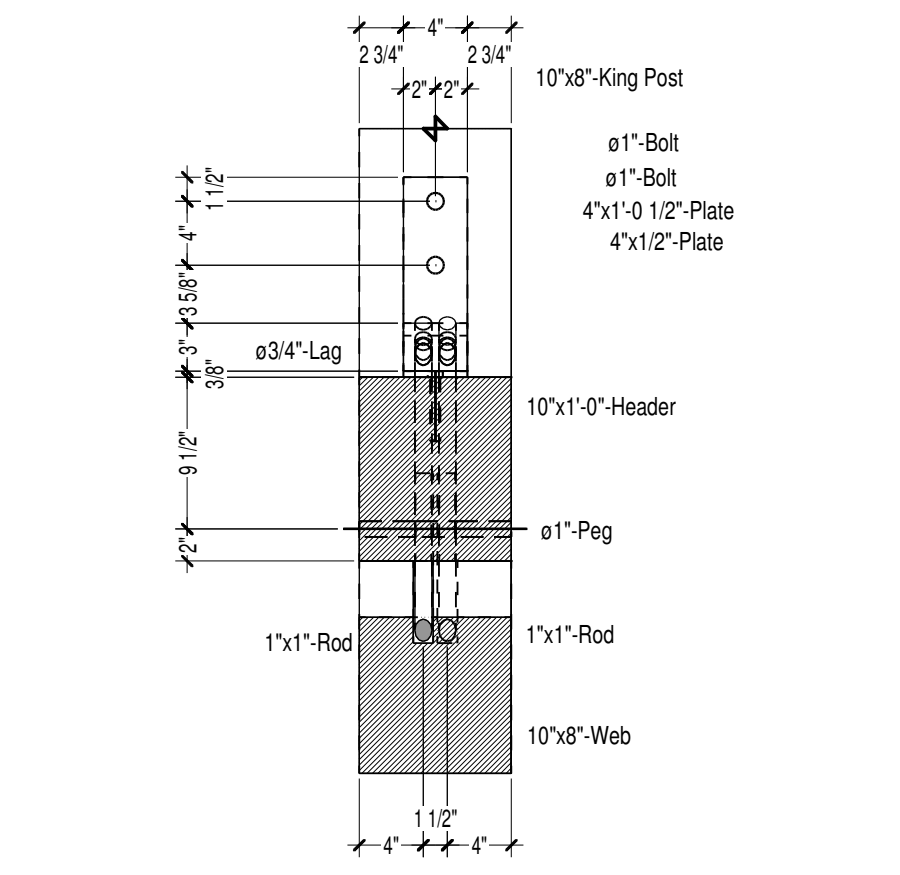
Location: Detail 10 Scale: 1:12 View: Bent



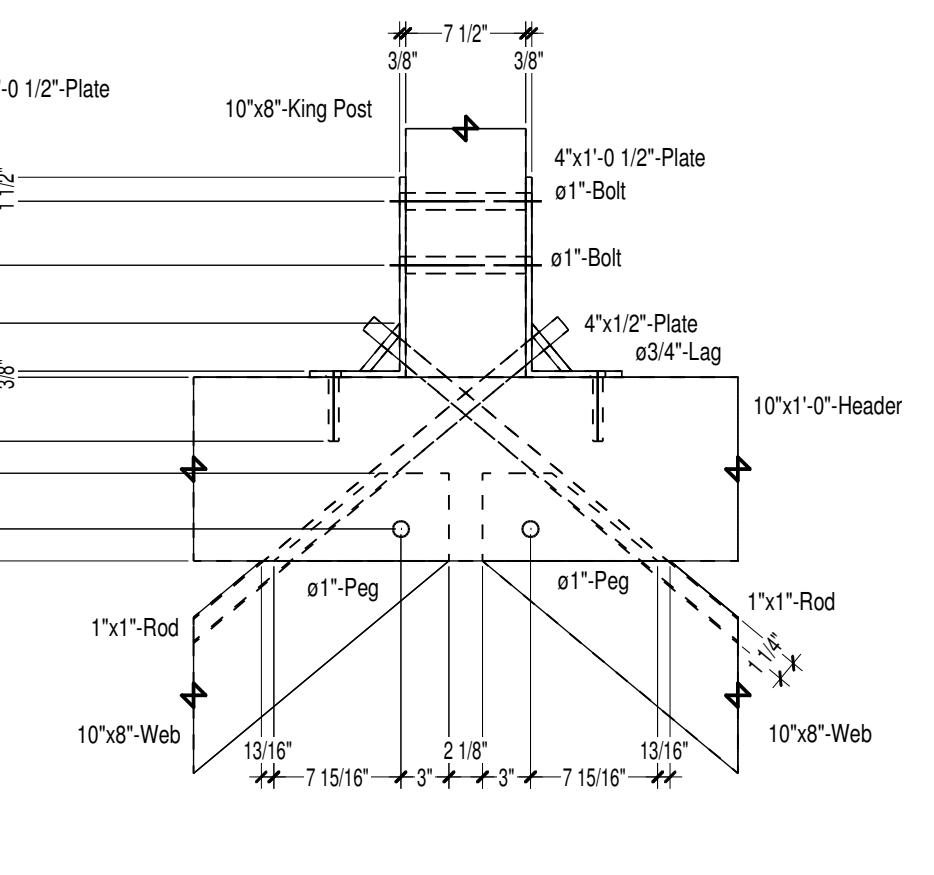
Location: Detail 13 Scale: 1:12 View: Axo



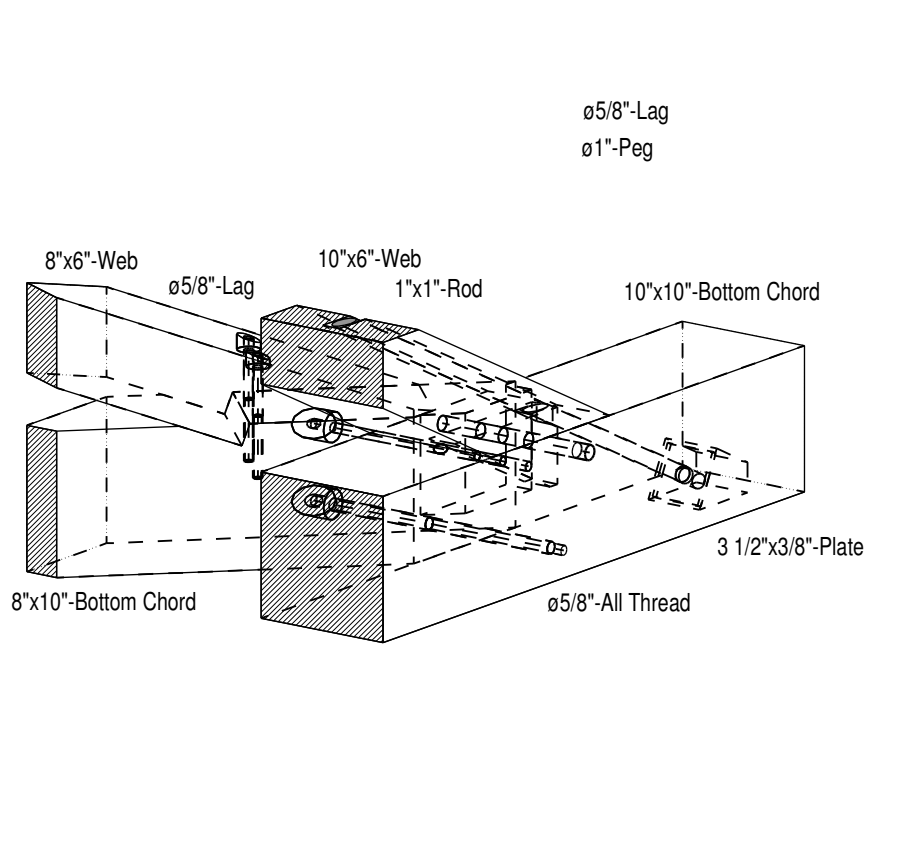
Location: Detail 13 Scale: 1:12 View: Top



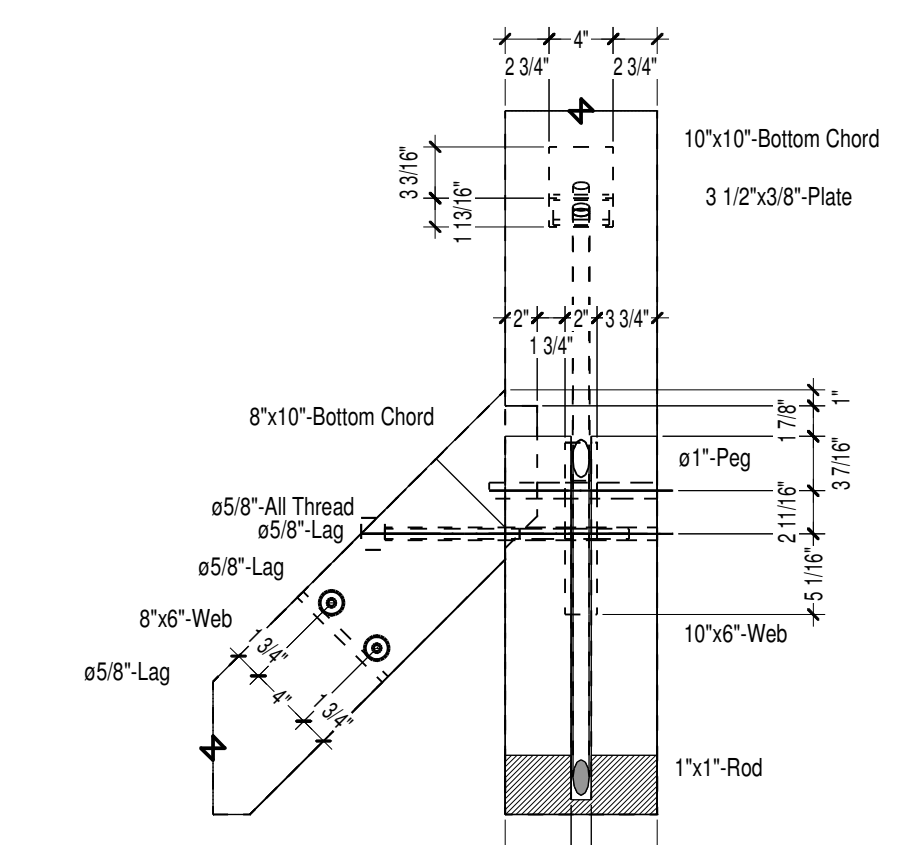
Location: Detail 13 Scale: 1:12 View: Bay



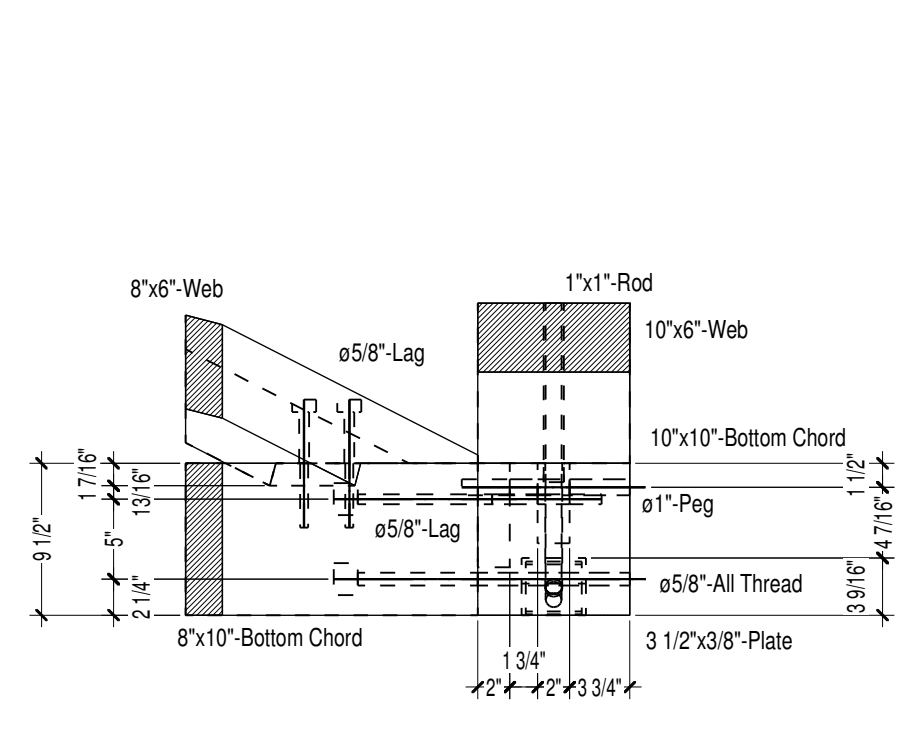
Location: Detail 13 Scale: 1:12 View: Bent



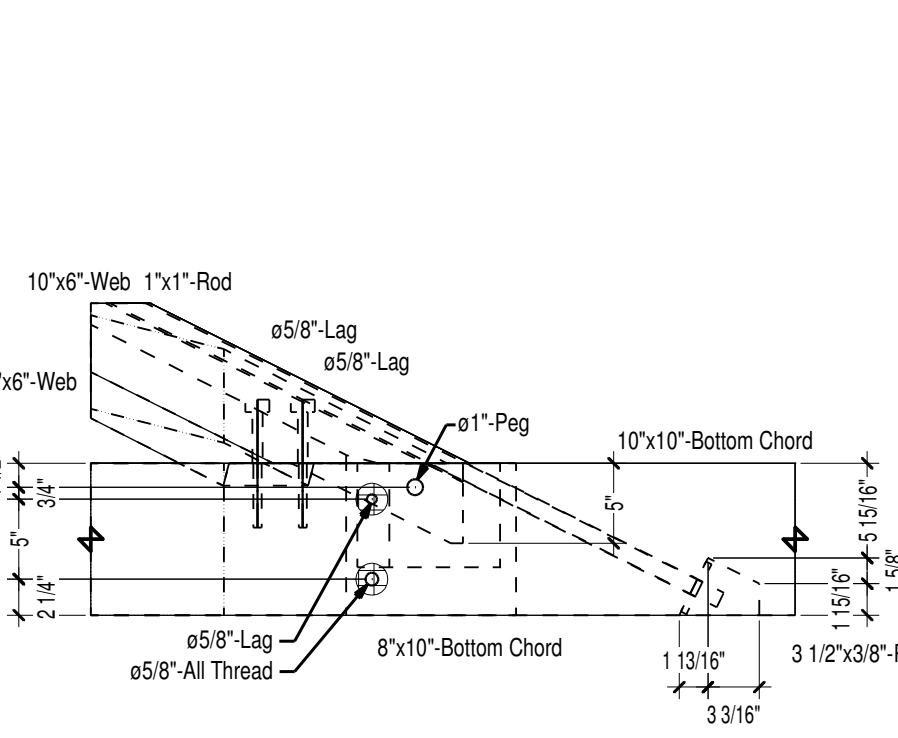
Location: Detail 11 Scale: 1:12 View: Axo



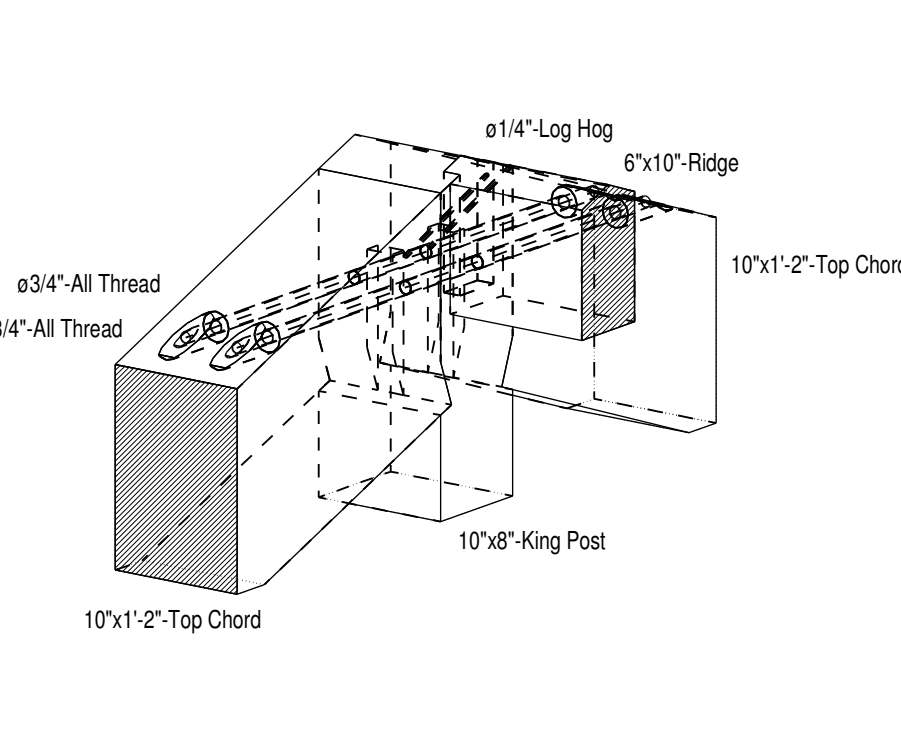
Location: Detail 11 Scale: 1:12 View: Top



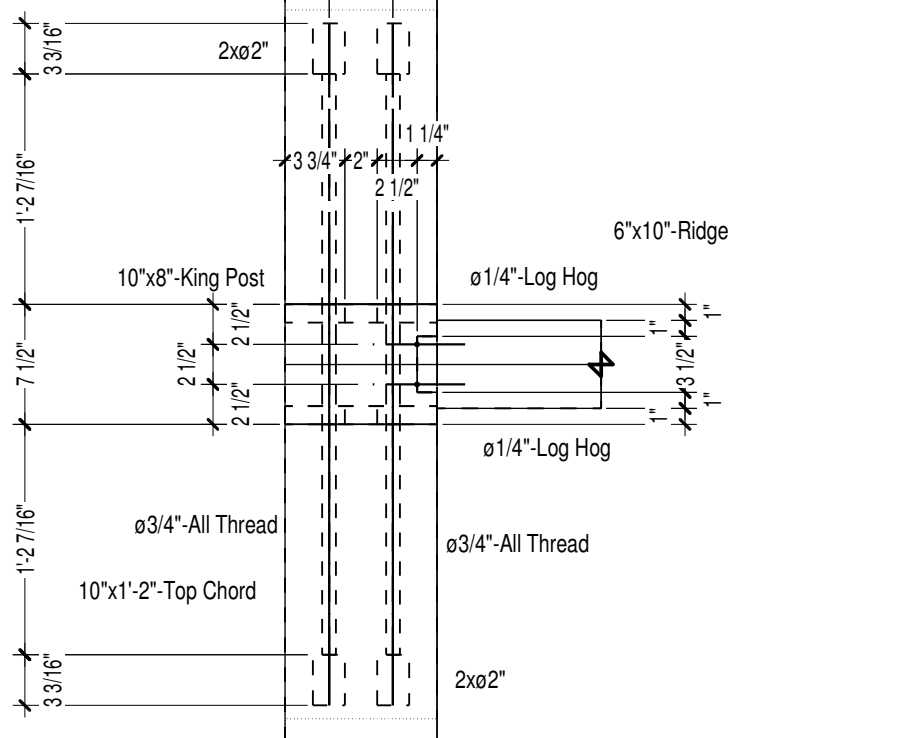
Location: Detail 11 Scale: 1:12 View: Bay



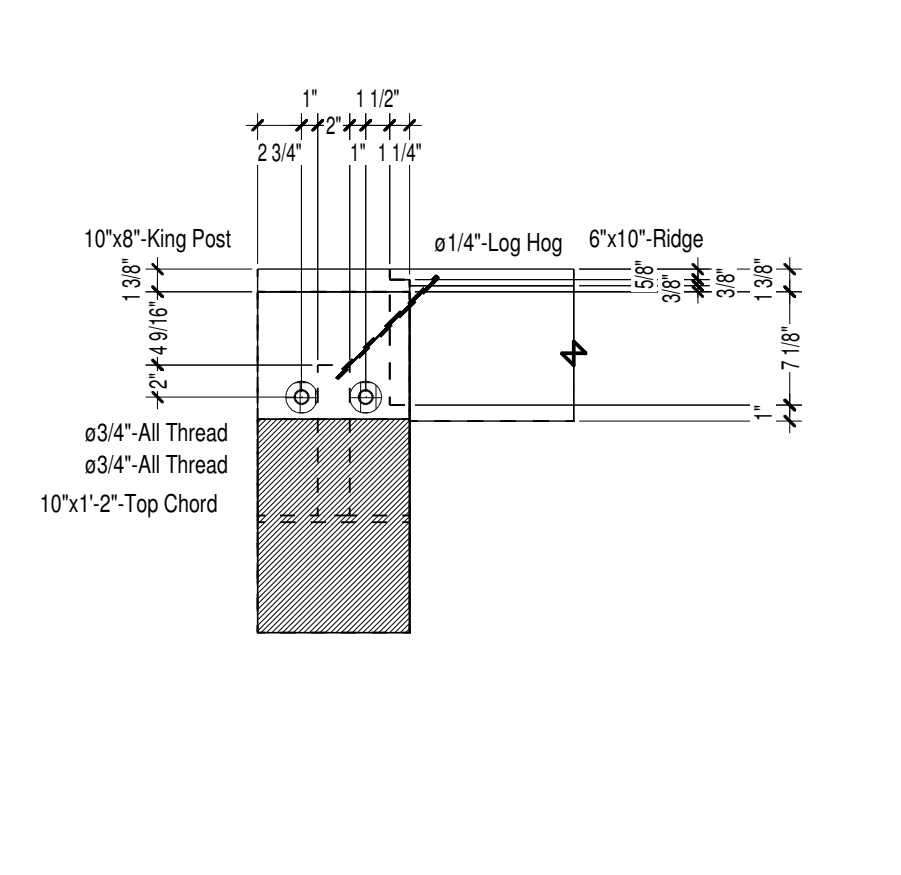
Location: Detail 11 Scale: 1:12 View: Bent



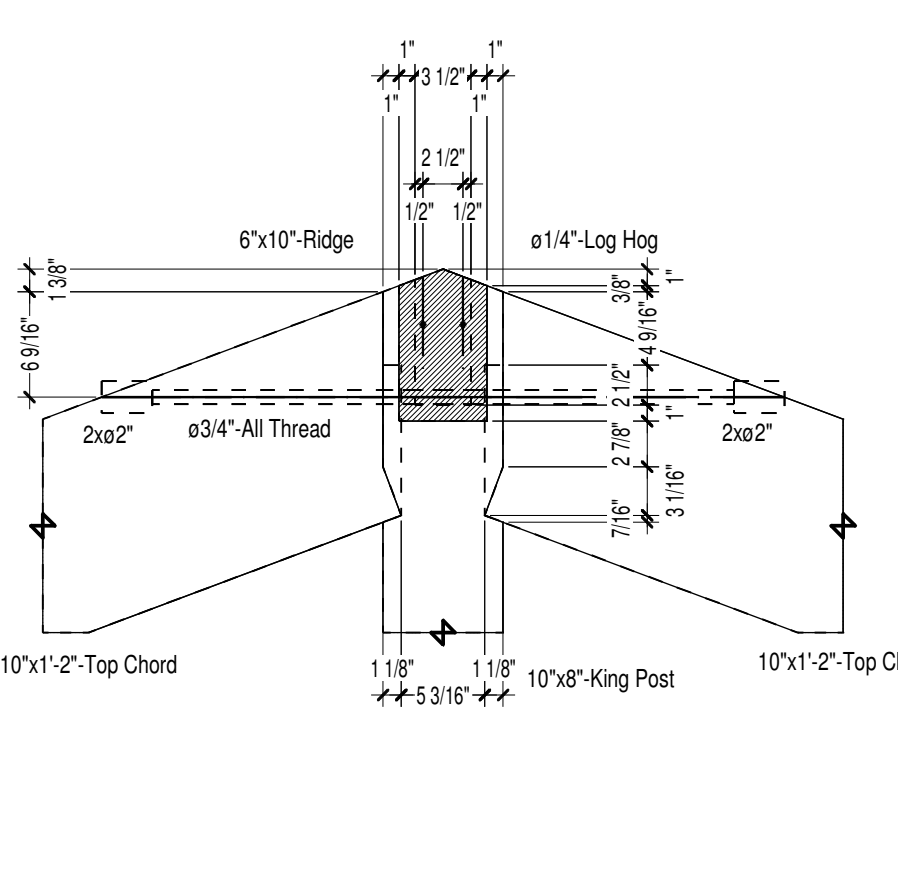
Location: Detail 14 Scale: 1:12 View: Axo



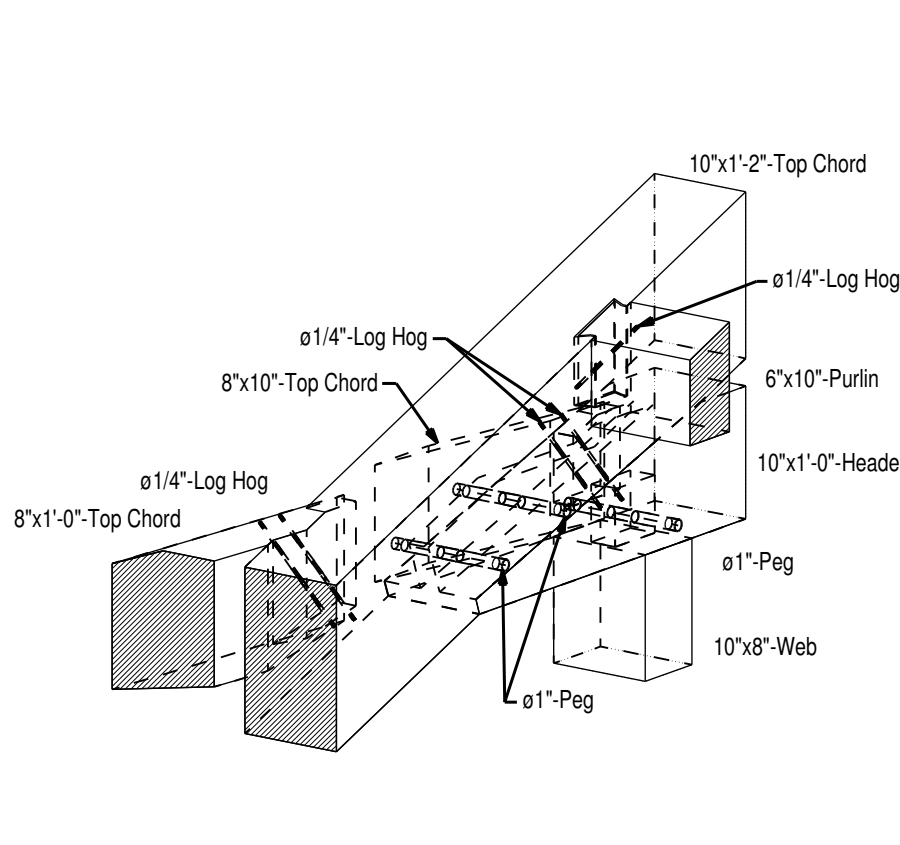
Location: Detail 14 Scale: 1:12 View: Top



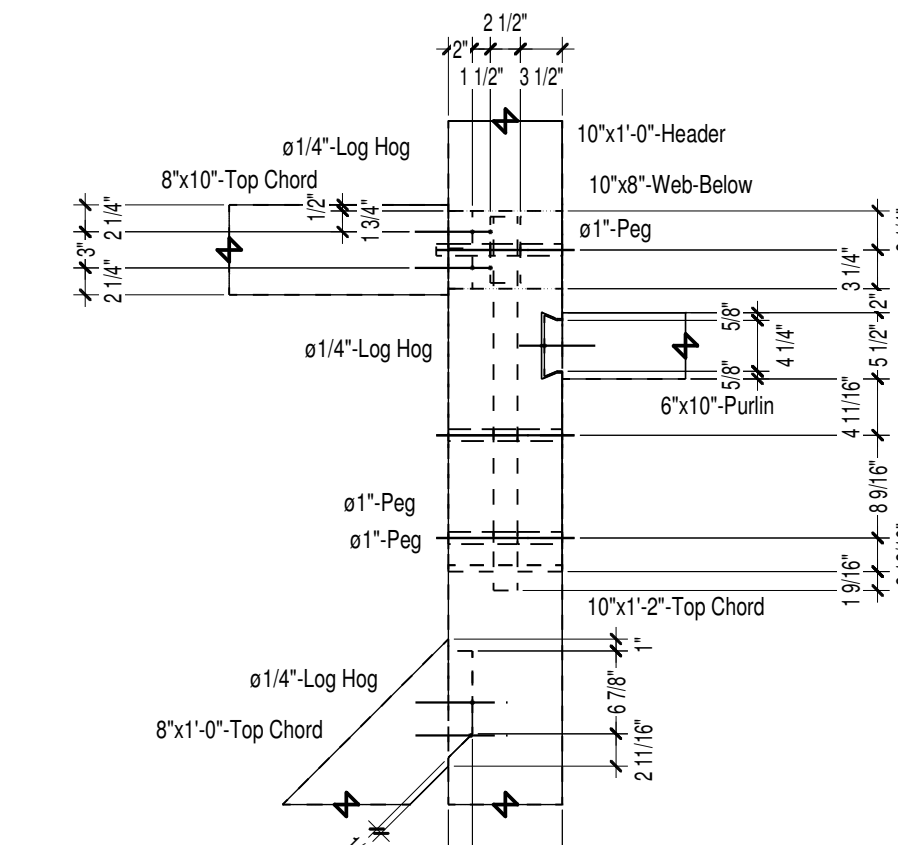
Location: Detail 14 Scale: 1:12 View: Bay



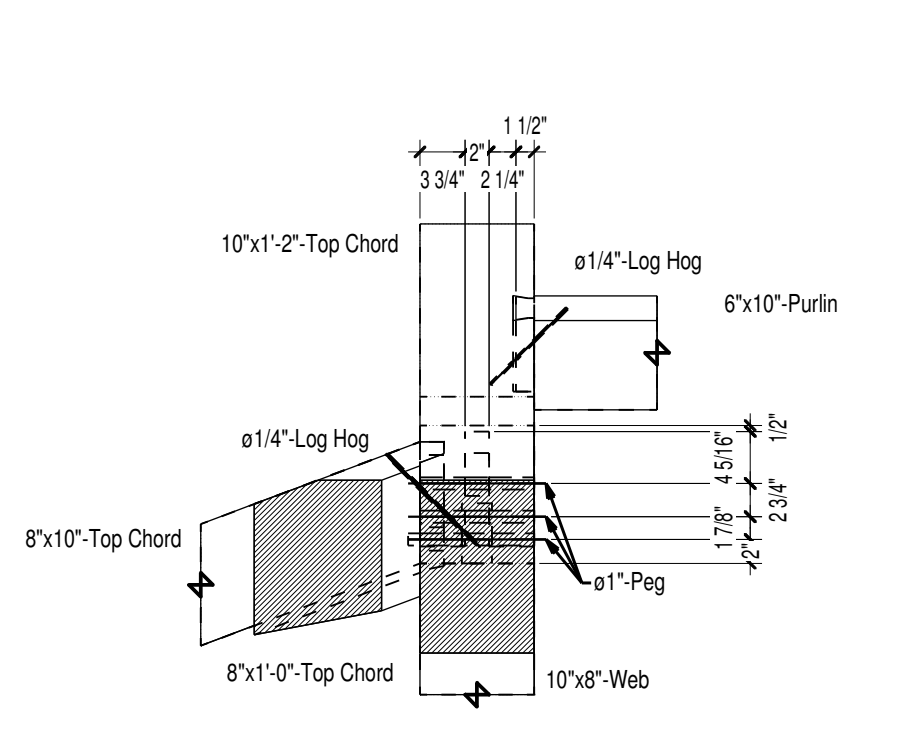
Location: Detail 14 Scale: 1:12 View: Bent



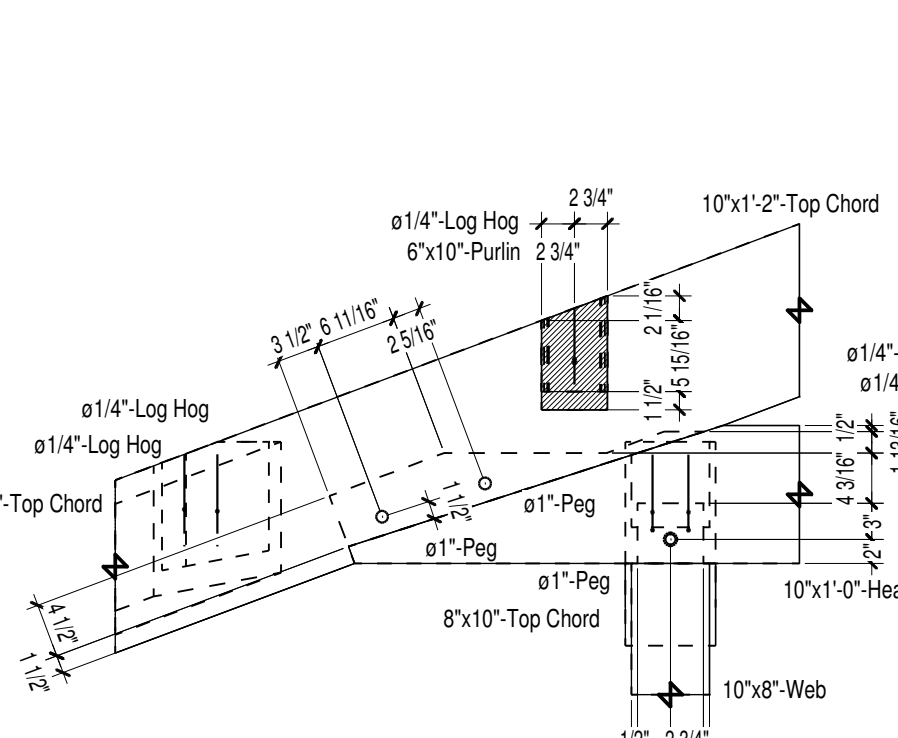
Location: Detail 12 Scale: 1:16 View: Axo



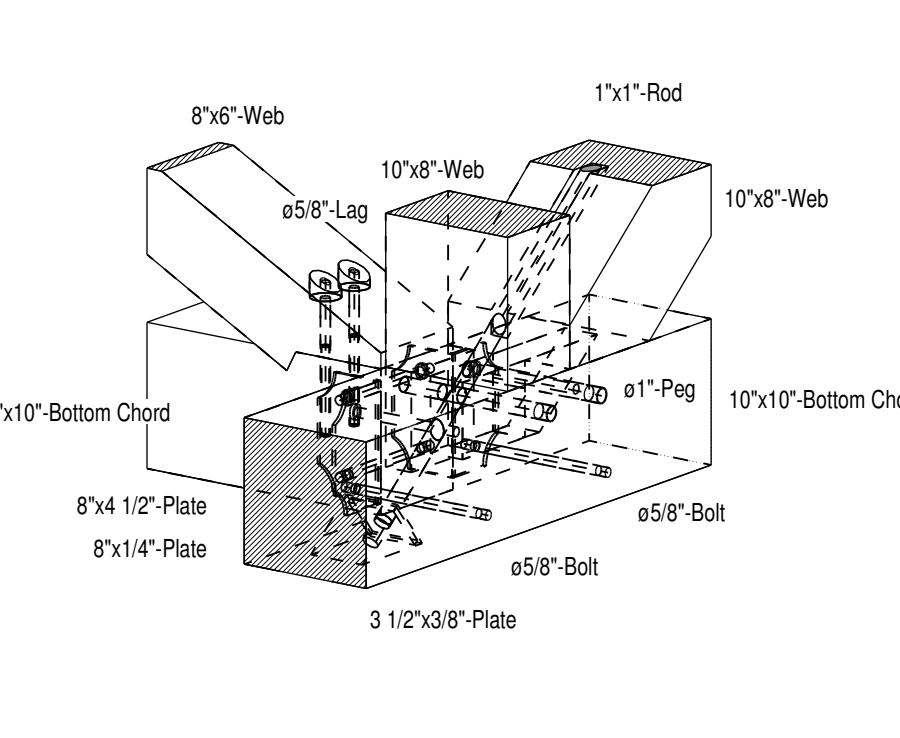
Location: Detail 12 Scale: 1:16 View: Top



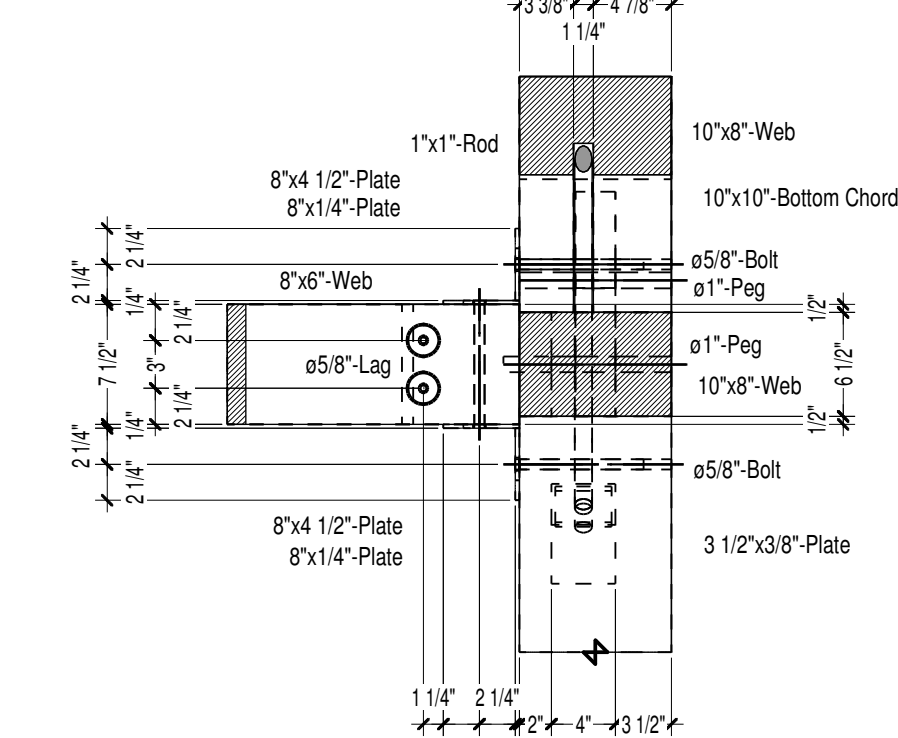
Location: Detail 12 Scale: 1:16 View: Bay



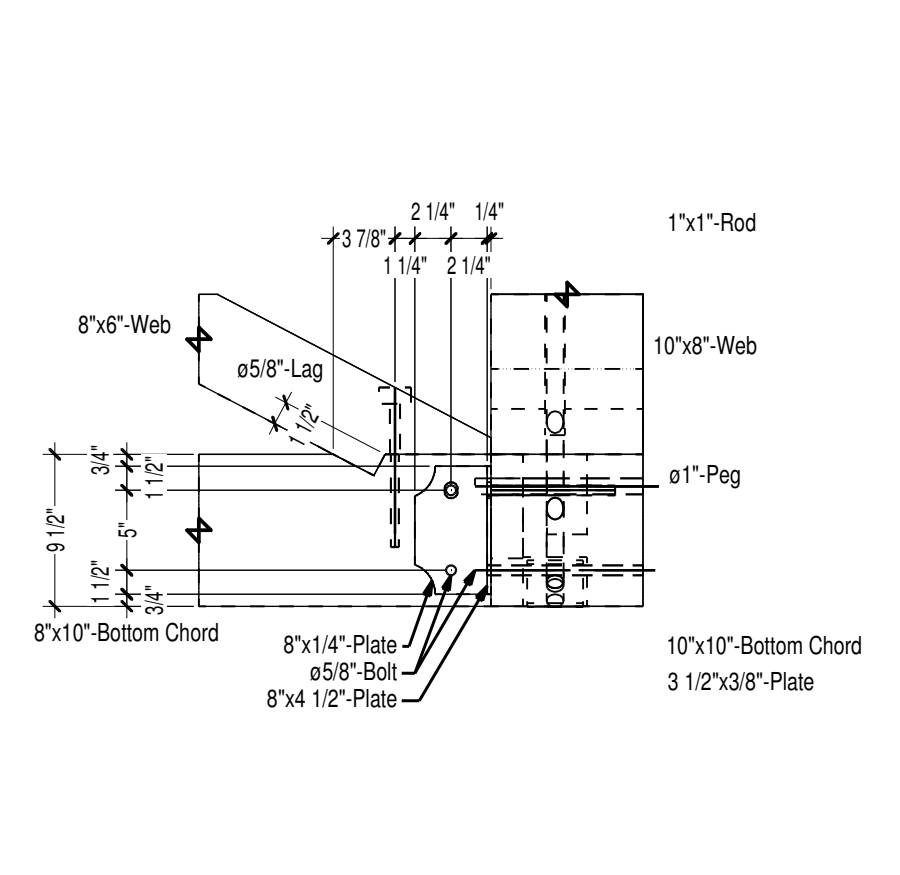
Location: Detail 12 Scale: 1:16 View: Bent



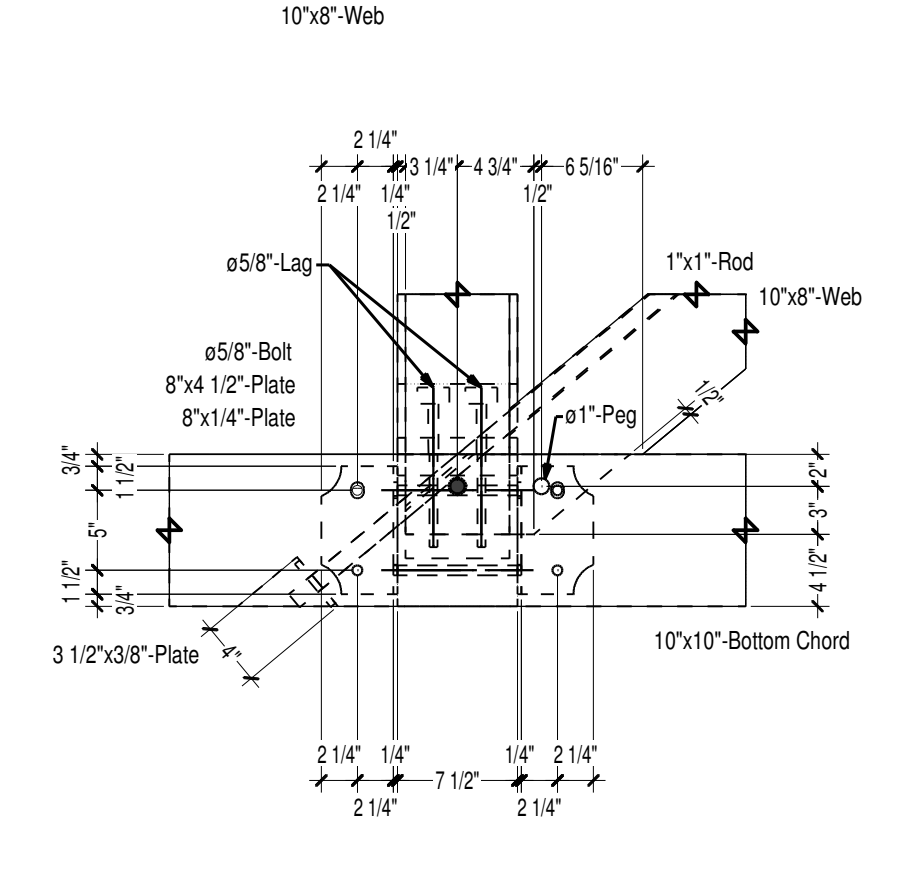
Location: Detail 15 Scale: 1:12 View: Axo



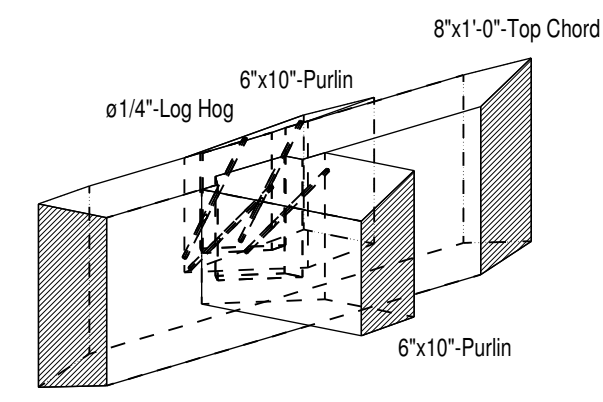
Location: Detail 15 Scale: 1:12 View: Top



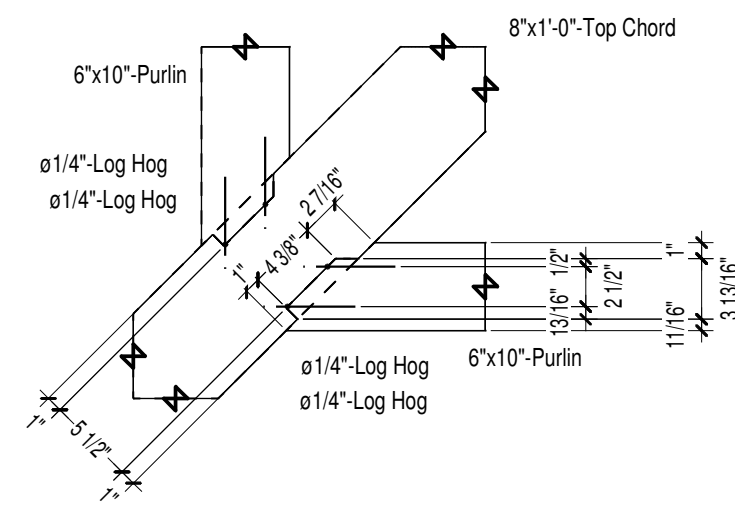
Location: Detail 15 Scale: 1:12 View: Bay



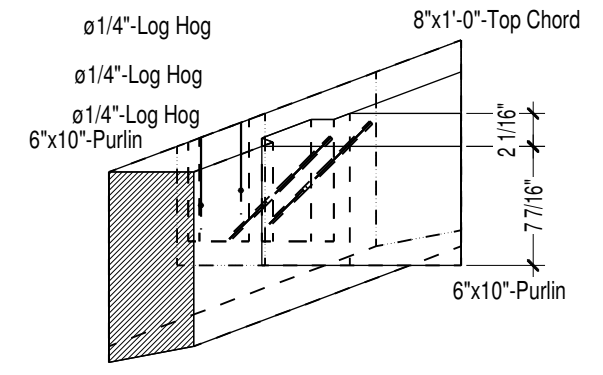
Location: Detail 15 Scale: 1:12 View: Bent



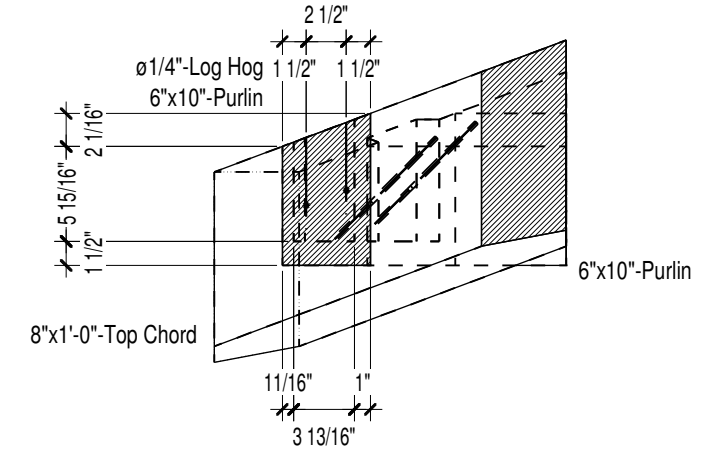
Location: Detail 16 Scale: 1:12 View: Axo



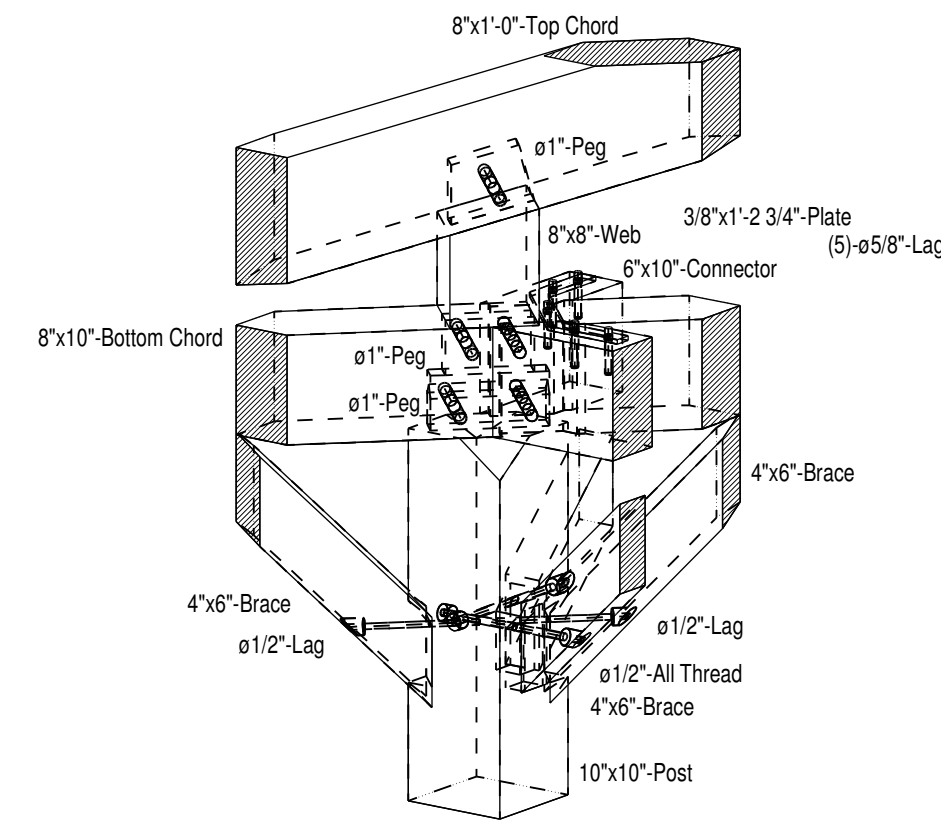
Location: Detail 16 Scale: 1:12 View: Top



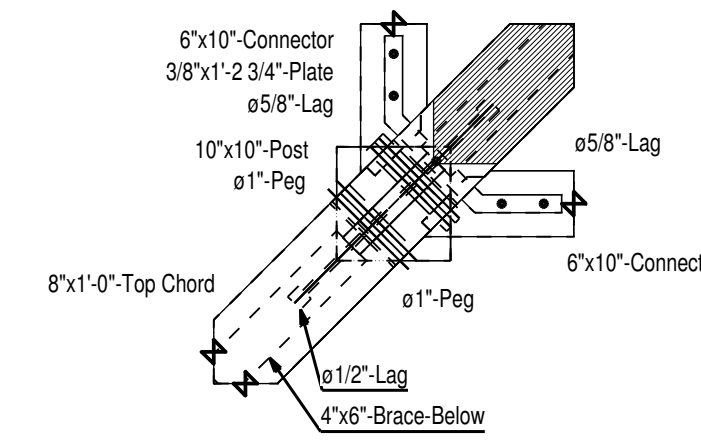
Location: Detail 16 Scale: 1:12 View: Bay



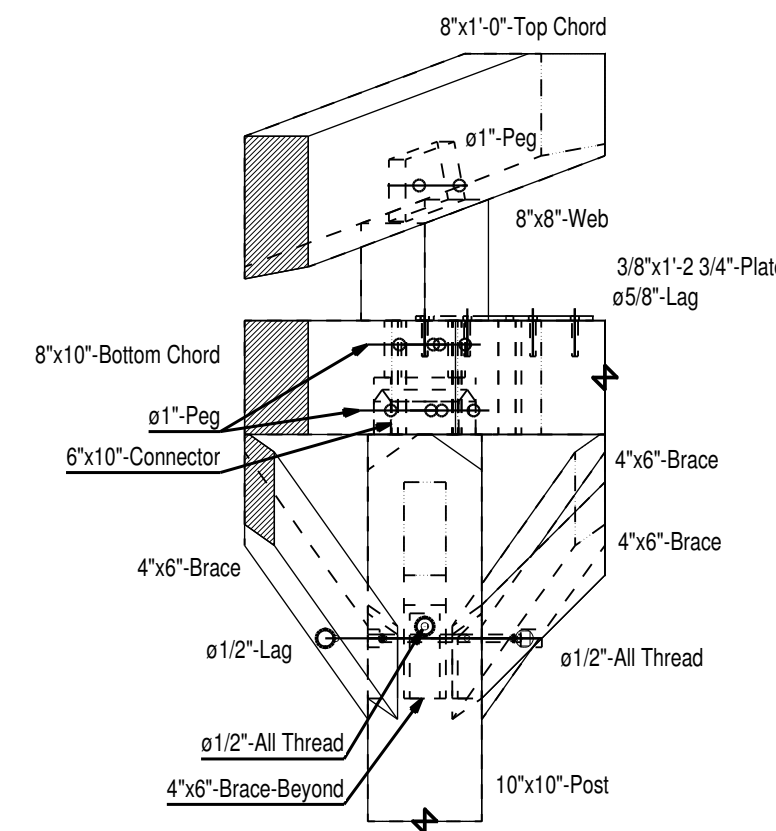
Location: Detail 16 Scale: 1:12 View: Bent



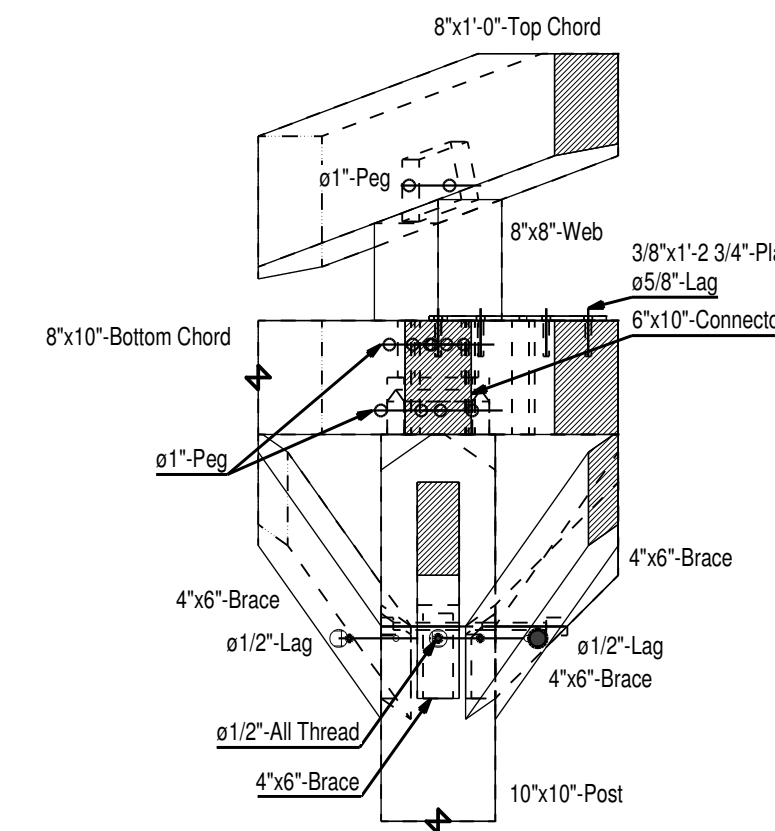
Location: Detail 17 Scale: 1:16 View: Axo



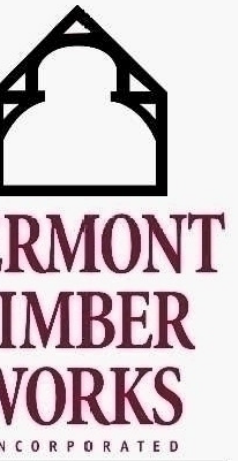
Location: Detail 17 Scale: 1:16 View: Top



Location: Detail 17 Scale: 1:16 View: Bay



Location: Detail 17 Scale: 1:16 View: Bent



36 Fairbanks Road  
North Springfield, Vermont  
802.886.1917 - 802.886.6188 fax  
www.vermonttimberworks.com

THE ENGINEERING ADVICE, OPINIONS, AND RECOMMENDATIONS IN THIS DRAWING ARE THOSE OF THE LICENSED PROFESSIONAL ENGINEER WHOSE STAMP APPEARS HEREIN, AND NOT THOSE OF VERMONT TIMBER WORKS, INC.

Details

Project: Cadwalader Picnic Pavilion  
Timber Frame  
Trenton, NJ

Drawn By: df  
Checked By: XX  
Scale: As Noted  
Date: 02-22-11  
Plot Date: 02-22-11

REVISIONS	BY	CHECKED BY
XX/XX/XX	XX	XX

SHEET  
F-6

COPYRIGHT VERMONT TIMBER WORKS, INC.  
THIS DRAWING MAY BE UTILIZED ONLY BY VTW FOR THE WORK SHOWN HEREIN AT THE SITE SPECIFIED. ANY OTHER USE OF THIS DRAWING INCLUDING, WITHOUT LIMITATION, ANY REPRODUCTION OR ALTERATION OF THIS ARCHITECTURAL WORK, WITHOUT THE PRIOR WRITTEN APPROVAL OF VERMONT TIMBER WORKS, INC. IS A VIOLATION OF LAW AND PROHIBITED.